

Datasheet for ABIN5530382

**anti-Achaete-scute complex protein T5 (AC) (AA 387-416), (C-Term) antibody**[Go to Product page](#)**2** Images

## Overview

Quantity:	400 µL
Target:	Achaete-scute complex protein T5 (AC)
Binding Specificity:	AA 387-416, C-Term
Reactivity:	Human
Host:	Rabbit
Clonality:	Polyclonal
Conjugate:	Un-conjugated
Application:	Western Blotting (WB), Immunohistochemistry (Paraffin-embedded Sections) (IHC (p))

## Product Details

Immunogen:	This ACR antibody is generated from rabbits immunized with a KLH conjugated synthetic peptide between 387-416 amino acids from the C-terminal region of human ACR.
Isotype:	Ig Fraction
Purification:	This antibody is prepared by Saturated Ammonium Sulfate (SAS) precipitation followed by dialysis

## Target Details

Target:	Achaete-scute complex protein T5 (AC)
Alternative Name:	AC ( <a href="#">AC Products</a> )
Background:	ACR is the major proteinase present in the acrosome of mature spermatozoa. It is a typical serine proteinase with trypsin-like specificity. It is stored in the acrosome in its precursor form,

## Target Details

proacrosin. The active enzyme functions in the lysis of the zona pellucida, thus facilitating penetration of the sperm through the innermost glycoprotein layers of the ovum. The mRNA for proacrosin is synthesized only in the postmeiotic stages of spermatogenesis. In humans proacrosin first appears in the haploid spermatids.

Molecular Weight: 46 kDa

Gene ID: 49

UniProt: [P10323](#)

## Application Details

Application Notes: For WB starting dilution is: 1:1000

For IHC-P starting dilution is: 1:50~100

Restrictions: For Research Use only

## Handling

Format: Liquid

Concentration: 2 mg/mL

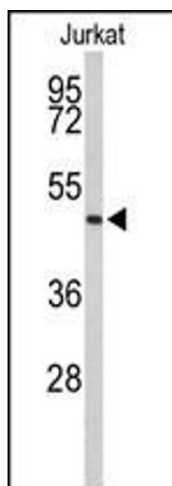
Buffer: Supplied in PBS with 0.09 % (W/V) sodium azide.

Preservative: Sodium azide

Precaution of Use: This product contains Sodium azide: a POISONOUS AND HAZARDOUS SUBSTANCE which should be handled by trained staff only.

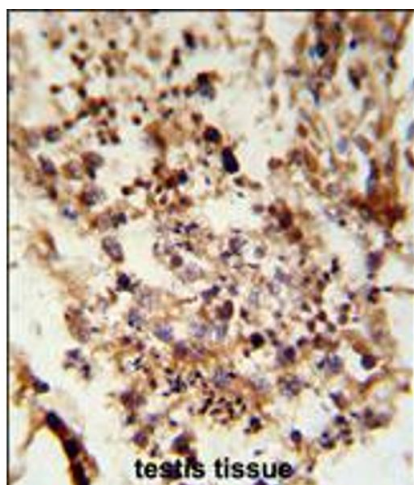
Storage: 4 °C, -20 °C

Storage Comment: Store at 4°C for three months and -20°C, stable for up to one year. As with all antibodies care should be taken to avoid repeated freeze thaw cycles. Antibodies should not be exposed to prolonged high temperatures.



#### Western Blotting

**Image 1.** Western blot analysis of ACR Antibody in Jurkat cell line lysates (35ug/lane)



#### Immunohistochemistry

**Image 2.** Formalin-fixed and paraffin-embedded human testis tissue reacted with ACR Antibody, which was peroxidase-conjugated to the secondary antibody, followed by DAB staining.