

Datasheet for ABIN5530398

anti-Arylsulfatase D antibody (C-Term)[Go to Product page](#)**1** Image

Overview

| | |
|----------------------|--|
| Quantity: | 400 µL |
| Target: | Arylsulfatase D (ARSD) |
| Binding Specificity: | AA 502-532, C-Term |
| Reactivity: | Human |
| Host: | Rabbit |
| Clonality: | Polyclonal |
| Conjugate: | This Arylsulfatase D antibody is un-conjugated |
| Application: | Western Blotting (WB) |

Product Details

| | |
|---------------|--|
| Immunogen: | This ARSD antibody is generated from rabbits immunized with a KLH conjugated synthetic peptide between 502-532 amino acids from the C-terminal region of human ARSD. |
| Isotype: | Ig Fraction |
| Purification: | This antibody is purified through a protein A column, followed by peptide affinity purification. |

Target Details

| | |
|-------------------|--|
| Target: | Arylsulfatase D (ARSD) |
| Alternative Name: | ARSD (ARSD Products) |
| Background: | The protein encoded by this gene is a member of the sulfatase family. Sulfatases are essential for the correct composition of bone and cartilage matrix. This encoded protein is postrationally glycosylated and localized to the lysosome. Two transcript variants encoding |

Target Details

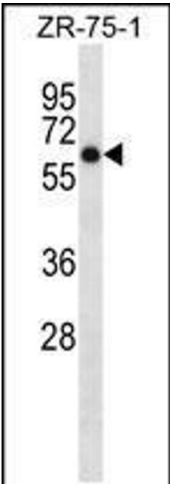
| | |
|-------------------|---|
| | different isoforms have been found for this gene. |
| Molecular Weight: | 65 kDa |
| Gene ID: | 414 |
| UniProt: | P51689 |

Application Details

| | |
|--------------------|-------------------------------------|
| Application Notes: | For WB starting dilution is: 1:1000 |
| Restrictions: | For Research Use only |

Handling

| | |
|--------------------|--|
| Format: | Liquid |
| Concentration: | 0.5 mg/mL |
| Buffer: | Supplied in PBS with 0.09 % (W/V) sodium azide. |
| Preservative: | Sodium azide |
| Precaution of Use: | This product contains Sodium azide: a POISONOUS AND HAZARDOUS SUBSTANCE which should be handled by trained staff only. |
| Storage: | 4 °C,-20 °C |
| Storage Comment: | Store at 4°C for three months and -20°C, stable for up to one year. As with all antibodies care should be taken to avoid repeated freeze thaw cycles. Antibodies should not be exposed to prolonged high temperatures. |



Western Blotting

Image 1. Western blot analysis in ZR-75-1 cell line lysates (35ug/lane).