

Datasheet for ABIN5530412
anti-GUCY1A2 antibody (N-Term)

2 Images

[Go to Product page](#)

Overview

Quantity:	400 µL
Target:	GUCY1A2
Binding Specificity:	AA 105-136, N-Term
Reactivity:	Human, Mouse
Host:	Rabbit
Clonality:	Polyclonal
Conjugate:	This GUCY1A2 antibody is un-conjugated
Application:	Immunohistochemistry (Paraffin-embedded Sections) (IHC (p)), Western Blotting (WB)

Product Details

Immunogen:	This Guanylyl Cyclase alpha 2 (GUCY1A2) antibody is generated from rabbits immunized with a KLH conjugated synthetic peptide between 105-136 amino acids from the N-terminal region of human Guanylyl Cyclase alpha 2 (GUCY1A2).
Isotype:	Ig Fraction
Purification:	This antibody is prepared by Saturated Ammonium Sulfate (SAS) precipitation followed by dialysis

Target Details

Target:	GUCY1A2
Abstract:	GUCY1A2 Products
Background:	Soluble guanylate cyclase (sGC), a heterodimeric protein consisting of an alpha and a beta

Target Details

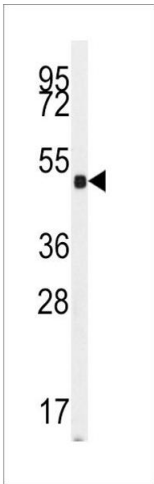
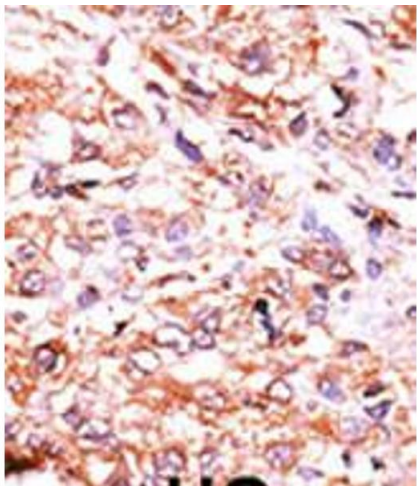
	subunit, catalyzes the conversion of GTP to the second messenger cGMP and functions as the main receptor for nitric oxide and nitrovasodilator drugs.
Molecular Weight:	82 kDa
Gene ID:	2977
UniProt:	P33402

Application Details

Application Notes:	For IHC-P starting dilution is: 1:50~100
	For WB starting dilution is: 1:1000
Restrictions:	For Research Use only

Handling

Format:	Liquid
Concentration:	2 mg/mL
Buffer:	Supplied in PBS with 0.09 % (W/V) sodium azide.
Preservative:	Sodium azide
Precaution of Use:	This product contains Sodium azide: a POISONOUS AND HAZARDOUS SUBSTANCE which should be handled by trained staff only.
Storage:	4 °C,-20 °C
Storage Comment:	Store at 4°C for three months and -20°C, stable for up to one year. As with all antibodies care should be taken to avoid repeated freeze thaw cycles. Antibodies should not be exposed to prolonged high temperatures.



Immunohistochemistry

Image 1. Formalin-fixed and paraffin-embedded human cancer tissue reacted with the primary antibody, which was peroxidase-conjugated to the secondary antibody, followed by AEC staining. BC = breast carcinoma; HC = hepatocarcinoma.

Western Blotting

Image 2. Western blot analysis of anti-GUCY1A2 Antibody in mouse cerebellum tissue lysates (35ug/lane)