

Datasheet for ABIN5530435  
**anti-OTUD7B antibody (C-Term)**[Go to Product page](#)

## 2 Images

## Overview

Quantity:	400 µL
Target:	OTUD7B
Binding Specificity:	AA 757-784, C-Term
Reactivity:	Human
Host:	Rabbit
Clonality:	Polyclonal
Conjugate:	This OTUD7B antibody is un-conjugated
Application:	Western Blotting (WB), Immunohistochemistry (Paraffin-embedded Sections) (IHC (p))

## Product Details

Immunogen:	This OTU7B antibody is generated from rabbits immunized with a KLH conjugated synthetic peptide between 757-784 amino acids from the C-terminal region of human OTU7B.
Isotype:	Ig Fraction
Purification:	This antibody is purified through a protein A column, followed by peptide affinity purification.

## Target Details

Target:	OTUD7B
Alternative Name:	OTU7B ( <a href="#">OTUD7B Products</a> )
Background:	OTU7B has deubiquitinating activity that is directed towards 'Lys-48' or 'Lys-63'-linked polyubiquitin chains. Hydrolyzes both linear and branched forms of polyubiquitin. Negative regulator of nuclear factor NF-kappa-B.

## Target Details

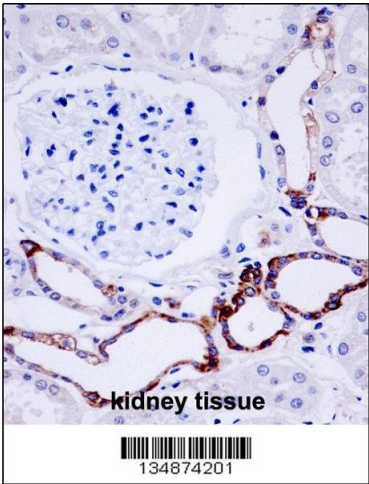
Molecular Weight:	93 kDa
Gene ID:	56957
UniProt:	<a href="#">Q6GQQ9</a>

## Application Details

Application Notes:	For WB starting dilution is: 1:1000
	For IHC-P starting dilution is: 1:10~50
Restrictions:	For Research Use only

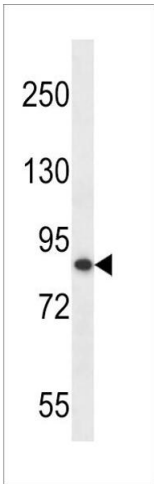
## Handling

Format:	Liquid
Concentration:	0.5 mg/mL
Buffer:	Supplied in PBS with 0.09 % (W/V) sodium azide.
Preservative:	Sodium azide
Precaution of Use:	This product contains Sodium azide: a POISONOUS AND HAZARDOUS SUBSTANCE which should be handled by trained staff only.
Storage:	4 °C,-20 °C
Storage Comment:	Store at 4°C for three months and -20°C, stable for up to one year. As with all antibodies care should be taken to avoid repeated freeze thaw cycles. Antibodies should not be exposed to prolonged high temperatures.



### Immunohistochemistry

**Image 1.** OTU7B Antibody immunohistochemistry analysis in formalin fixed and paraffin embedded human kidney tissue followed by peroxidase conjugation of the secondary antibody and DAB staining.



### Western Blotting

**Image 2.** Western blot analysis in MDA-MB453 cell line lysates (35ug/lane).