

Datasheet for ABIN5530477

anti-SMARCE1 antibody (C-Term)[Go to Product page](#)**2** Images

Overview

Quantity:	400 µL
Target:	SMARCE1
Binding Specificity:	AA 307-335, C-Term
Reactivity:	Human
Host:	Rabbit
Clonality:	Polyclonal
Conjugate:	This SMARCE1 antibody is un-conjugated
Application:	Western Blotting (WB), Immunohistochemistry (Paraffin-embedded Sections) (IHC (p))

Product Details

Immunogen:	This SMARCE1 antibody is generated from rabbits immunized with a KLH conjugated synthetic peptide between 307-335 amino acids from the C-terminal region of human SMARCE1.
Isotype:	Ig Fraction
Purification:	This antibody is purified through a protein A column, followed by peptide affinity purification.

Target Details

Target:	SMARCE1
Alternative Name:	SMARCE1 (SMARCE1 Products)
Background:	The protein encoded by this gene is part of the large ATP-dependent chromatin remodeling complex SWI/SNF, which is required for transcriptional activation of genes normally repressed by chromatin. The encoded protein, either alone or when in the SWI/SNF complex, can bind to

Target Details

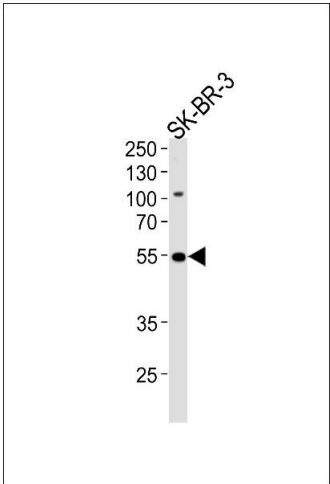
	4-way junction DNA, which is thought to mimic the topology of DNA as it enters or exits the nucleosome. The protein contains a DNA-binding HMG domain, but disruption of this domain does not abolish the DNA-binding or nucleosome-displacement activities of the SWI/SNF complex. Unlike most of the SWI/SNF complex proteins, this protein has no yeast counterpart.
Molecular Weight:	47 kDa
Gene ID:	6605
UniProt:	Q969G3
Pathways:	Chromatin Binding

Application Details

Application Notes:	For WB starting dilution is: 1:1000 For IHC-P starting dilution is: 1:10~50
Restrictions:	For Research Use only

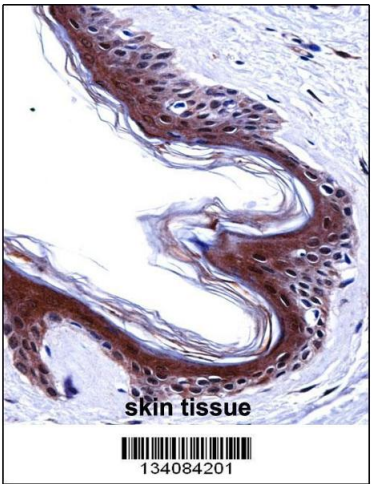
Handling

Format:	Liquid
Concentration:	0.5 mg/mL
Buffer:	Supplied in PBS with 0.09 % (W/V) sodium azide.
Preservative:	Sodium azide
Precaution of Use:	This product contains Sodium azide: a POISONOUS AND HAZARDOUS SUBSTANCE which should be handled by trained staff only.
Storage:	4 °C,-20 °C
Storage Comment:	Store at 4°C for three months and -20°C, stable for up to one year. As with all antibodies care should be taken to avoid repeated freeze thaw cycles. Antibodies should not be exposed to prolonged high temperatures.



Western Blotting

Image 1. Western blot analysis of lysate from SK-BR-3 cell line, using SMARCE1 Antibody at 1:1000 at each lane.



Immunohistochemistry

Image 2. SMARCE1 Antibody immunohistochemistry analysis in formalin fixed and paraffin embedded human skin tissue followed by peroxidase conjugation of the secondary antibody and DAB staining.