



[Go to Product page](#)

Datasheet for ABIN5530540  
**anti-SLC47A2 antibody (N-Term)**

1 Image

### Overview

Quantity:	400 µL
Target:	SLC47A2
Binding Specificity:	AA 125-153, N-Term
Reactivity:	Human, Mouse
Host:	Rabbit
Clonality:	Polyclonal
Conjugate:	This SLC47A2 antibody is un-conjugated
Application:	Western Blotting (WB)

### Product Details

Immunogen:	This S47A2 antibody is generated from rabbits immunized with a KLH conjugated synthetic peptide between 125-153 amino acids from the N-terminal region of human S47A2.
Isotype:	Ig Fraction
Purification:	This antibody is purified through a protein A column, followed by peptide affinity purification.

### Target Details

Target:	SLC47A2
Alternative Name:	S47A2 ( <a href="#">SLC47A2 Products</a> )
Background:	S47A2 belongs to a family of transporters involved in excretion of toxic electrolytes, both endogenous and exogenous, through urine and bile. This transporter family shares homology with the bacterial MATE (multidrug and toxin extrusion) protein family responsible for drug

## Target Details

---

resistance. This gene is one of two members of the MATE transporter family located near each other on chromosome 17.

Molecular Weight: 65 kDa

Gene ID: 146802

UniProt: [Q86VL8](#)

## Application Details

---

Application Notes: For WB starting dilution is: 1:1000

Restrictions: For Research Use only

## Handling

---

Format: Liquid

Concentration: 0.5 mg/mL

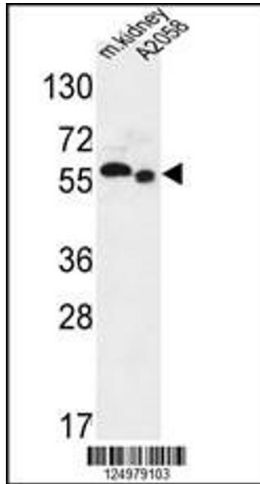
Buffer: Supplied in PBS with 0.09 % (W/V) sodium azide.

Preservative: Sodium azide

Precaution of Use: This product contains Sodium azide: a POISONOUS AND HAZARDOUS SUBSTANCE which should be handled by trained staff only.

Storage: 4 °C, -20 °C

Storage Comment: Store at 4°C for three months and -20°C, stable for up to one year. As with all antibodies care should be taken to avoid repeated freeze thaw cycles. Antibodies should not be exposed to prolonged high temperatures.



### Western Blotting

**Image 1.** Western blot analysis in mouse kidney tissue and A2058 cell line lysates (35ug/lane).