



Datasheet for ABIN5530607  
**anti-LCLAT1 antibody (C-Term)**



[Go to Product page](#)

2 Images

Overview

Quantity:	400 µL
Target:	LCLAT1
Binding Specificity:	AA 296-324, C-Term
Reactivity:	Mouse, Human
Host:	Rabbit
Clonality:	Polyclonal
Conjugate:	This LCLAT1 antibody is un-conjugated
Application:	Western Blotting (WB), Immunohistochemistry (Paraffin-embedded Sections) (IHC (p))

Product Details

Immunogen:	This LCLT1 antibody is generated from rabbits immunized with a KLH conjugated synthetic peptide between 296-324 amino acids from the C-terminal region of human LCLT1.
Isotype:	Ig Fraction
Purification:	This antibody is purified through a protein A column, followed by peptide affinity purification.

Target Details

Target:	LCLAT1
Alternative Name:	LCLT1 ( <a href="#">LCLAT1 Products</a> )
Background:	Acyl-CoA:lysocardiolipin acyltransferase. Possesses both lysophosphatidylinositol acyltransferase (LPIAT) and lysophosphatidylglycerol acyltransferase (LPGAT) activities. Recognizes both monolysocardiolipin and dilysocardiolipin as substrates with a preference for

## Target Details

---

linoleoyl-CoA and oleoyl-CoA as acyl donors. Acts as a remodeling enzyme for cardiolipin, a major membrane polyglycerophospholipid. Converts lysophosphatidic acid (LPA) into phosphatidic acid (PA) with a relatively low activity. Required for establishment of the hematopoietic and endothelial lineages.

---

Molecular Weight: 49 kDa

---

Gene ID: 253558

---

UniProt: [Q6UWP7](#)

## Application Details

---

Application Notes: For WB starting dilution is: 1:1000

For IHC-P starting dilution is: 1:50~100

---

Restrictions: For Research Use only

## Handling

---

Format: Liquid

---

Concentration: 0.5 mg/mL

---

Buffer: Supplied in PBS with 0.09 % (W/V) sodium azide.

---

Preservative: Sodium azide

---

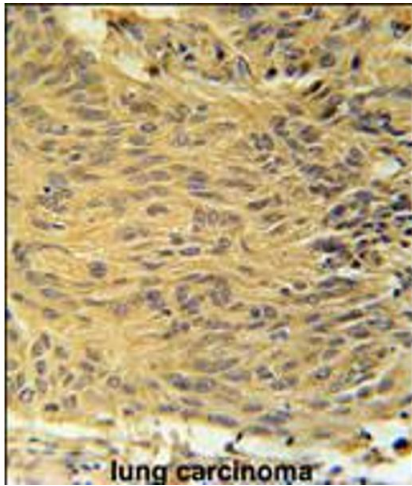
Precaution of Use: This product contains Sodium azide: a POISONOUS AND HAZARDOUS SUBSTANCE which should be handled by trained staff only.

---

Storage: 4 °C, -20 °C

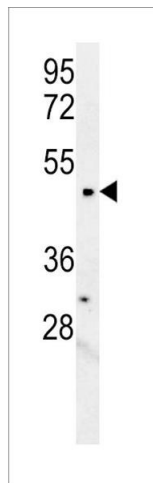
---

Storage Comment: Store at 4°C for three months and -20°C, stable for up to one year. As with all antibodies care should be taken to avoid repeated freeze thaw cycles. Antibodies should not be exposed to prolonged high temperatures.



### Immunohistochemistry

**Image 1.** LCLT1 Antibody immunohistochemistry analysis in formalin fixed and paraffin embedded human lung carcinoma followed by peroxidase conjugation of the secondary antibody and DAB staining.



### Western Blotting

**Image 2.** Western blot analysis in mouse kidney tissue lysates (15ug/lane). This demonstrates the detected LCLT1 protein (arrow).