

Datasheet for ABIN5530660
anti-DEPDC5 antibody (C-Term)



[Go to Product page](#)

3 Images

Overview

Quantity:	200 µL
Target:	DEPDC5
Binding Specificity:	AA 1404-1432, C-Term
Reactivity:	Human
Host:	Rabbit
Clonality:	Polyclonal
Conjugate:	This DEPDC5 antibody is un-conjugated
Application:	Western Blotting (WB), Flow Cytometry (FACS)

Product Details

Immunogen:	This DEPDC5 antibody is generated from rabbits immunized with a KLH conjugated synthetic peptide between 1404-1432 amino acids from the C-terminal region of human DEPDC5.
Isotype:	Ig Fraction
Purification:	This antibody is purified through a protein A column, followed by peptide affinity purification.

Target Details

Target:	DEPDC5
Alternative Name:	DEPDC5 (DEPDC5 Products)
Molecular Weight:	181 kDa
Gene ID:	9681

Target Details

UniProt: [O75140](#)

Application Details

Application Notes: For FACS starting dilution is: 1:25

For WB starting dilution is: 1:1000

Restrictions: For Research Use only

Handling

Format: Liquid

Concentration: 0.5 mg/mL

Buffer: Supplied in PBS with 0.09 % (W/V) sodium azide.

Preservative: Sodium azide

Precaution of Use: This product contains Sodium azide: a POISONOUS AND HAZARDOUS SUBSTANCE which should be handled by trained staff only.

Storage: 4 °C, -20 °C

Storage Comment: Store at 4°C for three months and -20°C, stable for up to one year. As with all antibodies care should be taken to avoid repeated freeze thaw cycles. Antibodies should not be exposed to prolonged high temperatures.

Images

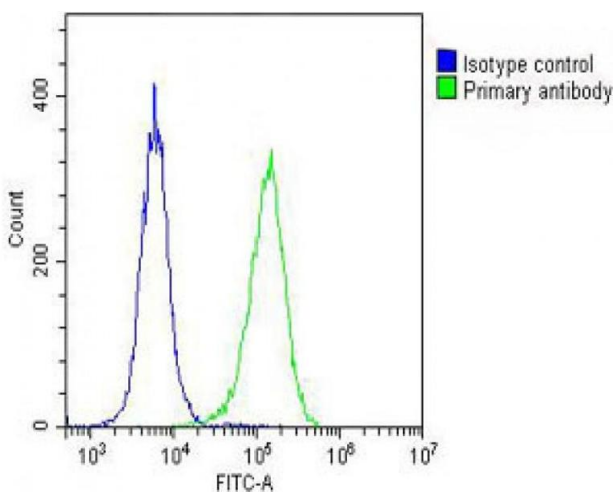
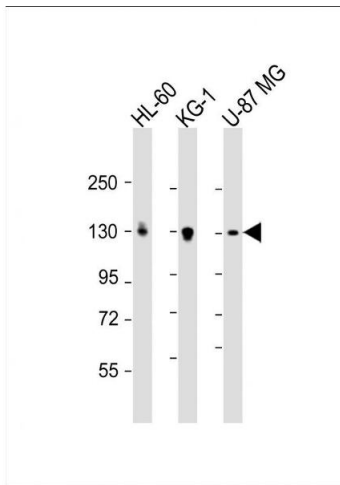


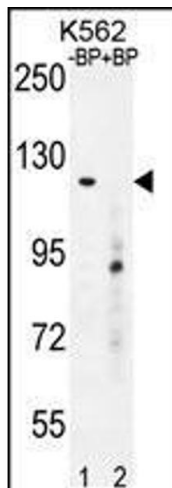
Image 1. Overlay histogram showing HeLa cells stained with Antibody (green line). The cells were fixed with 2% paraformaldehyde (10 min) and then permeabilized with 90% methanol for 10 min. The cells were then incubated in 2% bovine serum albumin to block non-specific protein-protein interactions followed by the antibody (1:25 dilution) for 60 min at 37°C. The secondary antibody used was Goat Anti-Rabbit IgG, DyLight 488 Conjugated Highly Cross-Adsorbed(OH191631) at 1/200 dilution for 40 min at 37°C.

Isotype control antibody (blue line) was rabbit IgG (1ug/1x10⁶ cells) used under the same conditions. Acquisition of >10,000 events was performed.



Western Blotting

Image 2. Western Blot at 1:2000 dilution Lane 1: HL-60 whole cell lysate Lane 2: KG-1 whole cell lysate Lane 3: U-87 MG whole cell lysate Lysates/proteins at 20 ug per lane.



Western Blotting

Image 3. Western blot analysis of DEP5 Antibody Pab pre-incubated without(lane 1) and with(lane 2) blocking peptide in K562 cell line lysate.