

Datasheet for ABIN5530714

anti-CTBP1 antibody (C-Term)**3** Images[Go to Product page](#)

Overview

Quantity:	400 µL
Target:	CTBP1
Binding Specificity:	AA 413-440, C-Term
Reactivity:	Human, Mouse, Rat
Host:	Rabbit
Clonality:	Polyclonal
Conjugate:	This CTBP1 antibody is un-conjugated
Application:	Western Blotting (WB), Immunofluorescence (IF)

Product Details

Immunogen:	This CTBP1 antibody is generated from rabbits immunized with a KLH conjugated synthetic peptide between 413-440 amino acids from the C-terminal region of human CTBP1.
Isotype:	Ig Fraction
Purification:	This antibody is purified through a protein A column, followed by peptide affinity purification.

Target Details

Target:	CTBP1
Alternative Name:	CTBP1 (CTBP1 Products)
Background:	<p>This gene encodes a protein that binds to the C-terminus of adenovirus E1A proteins. This phosphoprotein is a transcriptional repressor and may play a role during cellular proliferation.</p> <p>This protein and the product of a second closely related gene, CTBP2, can dimerize. Both</p>

Target Details

proteins can also interact with a polycomb group protein complex which participates in regulation of gene expression during development. Alternative splicing of transcripts from this gene results in multiple transcript variants.

Molecular Weight: 48 kDa

Gene ID: 1487

UniProt: [Q13363](#)

Pathways: [Retinoic Acid Receptor Signaling Pathway](#)

Application Details

Application Notes: For WB starting dilution is: 1:1000

For IF starting dilution is: 1:10~50

Restrictions: For Research Use only

Handling

Format: Liquid

Concentration: 0.4 mg/mL

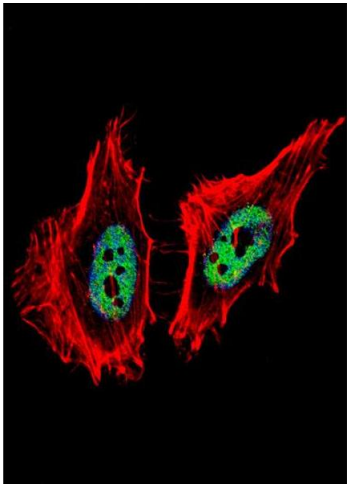
Buffer: Supplied in PBS with 0.09 % (W/V) sodium azide.

Preservative: Sodium azide

Precaution of Use: This product contains Sodium azide: a POISONOUS AND HAZARDOUS SUBSTANCE which should be handled by trained staff only.

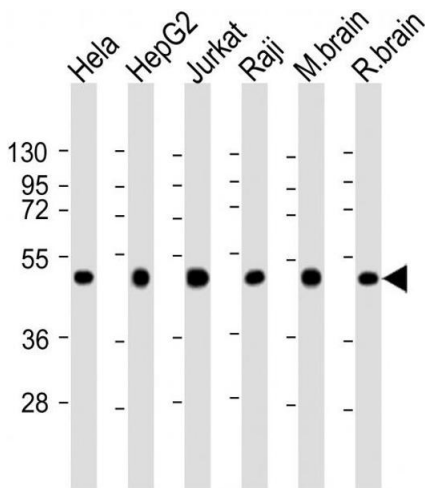
Storage: 4 °C, -20 °C

Storage Comment: Store at 4°C for three months and -20°C, stable for up to one year. As with all antibodies care should be taken to avoid repeated freeze thaw cycles. Antibodies should not be exposed to prolonged high temperatures.



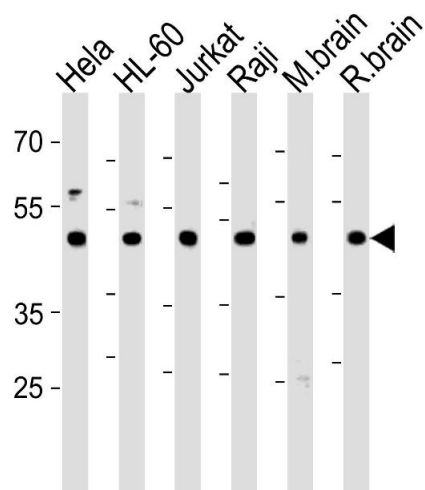
Immunofluorescence

Image 1. Fluorescent confocal image of HeLa cell stained with CTBP1 Antibody . HeLa cells were fixed with 4% PFA (20 min), permeabilized with Triton X-100 (0.1%, 10 min), then incubated with CTBP1 primary antibody (1:25). For secondary antibody, Alexa Fluor 488 conjugated donkey anti-rabbit antibody (green) was used (1:400).Cytoplasmic actin was counterstained with Alexa Fluor 555 (red) conjugated Phalloidin (7units/ml). Nuclei were counterstained with DAPI (blue) (10 ug/ml, 10 min).CTBP1 immunoreactivity is localized to nucleus significantly.



Western Blotting

Image 2. Western Blot at 1:2000 dilution Lane 1: HeLa whole cell lysate Lane 2: HepG2 whole cell lysate Lane 3: Jurkat whole cell lysate Lane 4: Raji whole cell lysate Lane 5: mouse brain lysate Lane 6: rat brain lysate Lysates/proteins at 20 ug per lane.



Western Blotting

Image 3. Western blot analysis in HeLa,HL-60,Jurkat,Raji cell line and mouse brain,rat brain tissue lysates (35ug/lane).