

Datasheet for ABIN5530753
anti-CCBP2 antibody (N-Term)[Go to Product page](#)

2 Images

Overview

Quantity:	400 µL
Target:	CCBP2
Binding Specificity:	AA 54-84, N-Term
Reactivity:	Human, Mouse
Host:	Rabbit
Clonality:	Polyclonal
Conjugate:	This CCBP2 antibody is un-conjugated
Application:	Western Blotting (WB), Immunohistochemistry (Paraffin-embedded Sections) (IHC (p))

Product Details

Immunogen:	This Chemokine Receptor D6 (CCBP2) antibody is generated from rabbits immunized with a KLH conjugated synthetic peptide between 54-84 amino acids from the N-terminal region of human Chemokine Receptor D6 (CCBP2).
Isotype:	Ig Fraction
Purification:	This antibody is prepared by Saturated Ammonium Sulfate (SAS) precipitation followed by dialysis

Target Details

Target:	CCBP2
Alternative Name:	Chemokine Receptor D6 (CCBP2 Products)
Background:	CCBP2 is a beta chemokine receptor, which is predicted to be a seven transmembrane protein

Target Details

similar to G protein-coupled receptors. Chemokines and their receptor-mediated signal transduction are critical for the recruitment of effector immune cells to the inflammation site. This gene is expressed in a range of tissues and hemopoietic cells. The expression of this receptor in lymphatic endothelial cells and overexpression in vascular tumors suggested its function in chemokine-driven recirculation of leukocytes and possible chemokine effects on the development and growth of vascular tumors. This receptor appears to bind the majority of beta-chemokine family members, however, its specific function remains unknown. This gene is mapped to chromosome 3p21.3, a region that includes a cluster of chemokine receptor genes.

Molecular Weight: 43 kDa

Gene ID: 1238

UniProt: [O00590](#)

Application Details

Application Notes: For WB starting dilution is: 1:1000

For IHC-P starting dilution is: 1:50~100

Restrictions: For Research Use only

Handling

Format: Liquid

Concentration: 2 mg/mL

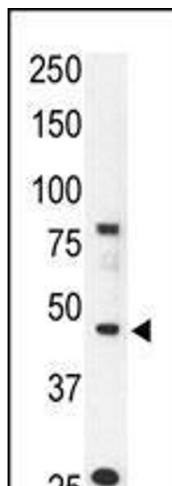
Buffer: Supplied in PBS with 0.09 % (W/V) sodium azide.

Preservative: Sodium azide

Precaution of Use: This product contains Sodium azide: a POISONOUS AND HAZARDOUS SUBSTANCE which should be handled by trained staff only.

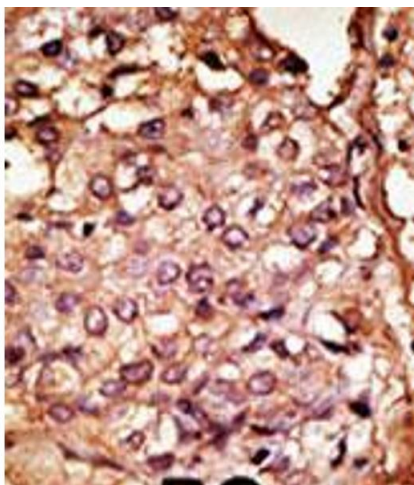
Storage: 4 °C, -20 °C

Storage Comment: Store at 4°C for three months and -20°C, stable for up to one year. As with all antibodies care should be taken to avoid repeated freeze thaw cycles. Antibodies should not be exposed to prolonged high temperatures.



Western Blotting

Image 1. Antibody is used in Western blot to detect CCBP2 in mouse liver tissue lysate.



Immunohistochemistry

Image 2. Formalin-fixed and paraffin-embedded human cancer tissue reacted with the primary antibody, which was peroxidase-conjugated to the secondary antibody, followed by AEC staining. BC = breast carcinoma; HC = hepatocarcinoma.