



Datasheet for ABIN5530778

**anti-Macrophage Mannose Receptor 1 antibody (N-Term)**[Go to Product page](#)**2** Images

## Overview

Quantity:	400 µL
Target:	Macrophage Mannose Receptor 1 (MRC1)
Binding Specificity:	AA 359-388, N-Term
Reactivity:	Human, Mouse
Host:	Rabbit
Clonality:	Polyclonal
Conjugate:	This Macrophage Mannose Receptor 1 antibody is un-conjugated
Application:	Western Blotting (WB)

## Product Details

Immunogen:	This MRC1L1 antibody is generated from rabbits immunized with a KLH conjugated synthetic peptide between 359-388 amino acids from the N-terminal region of human MRC1L1.
Isotype:	Ig Fraction
Purification:	This antibody is purified through a protein A column, followed by peptide affinity purification.

## Target Details

Target:	Macrophage Mannose Receptor 1 (MRC1)
Alternative Name:	MRC1L1 ( <a href="#">MRC1 Products</a> )
Background:	This gene encodes a type I membrane receptor protein highly related to the mannose receptor C type 1 protein (MRC1). The two genes are located near each other on chromosome 10 in a region thought to represent a segmental duplication.

## Target Details

Molecular Weight: 166 kDa

Gene ID: 4360

UniProt: [P22897](#)

## Application Details

Application Notes: For WB starting dilution is: 1:1000

Restrictions: For Research Use only

## Handling

Format: Liquid

Concentration: 0.5 mg/mL

Buffer: Supplied in PBS with 0.09 % (W/V) sodium azide.

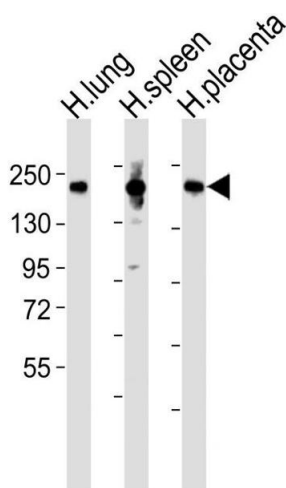
Preservative: Sodium azide

Precaution of Use: This product contains Sodium azide: a POISONOUS AND HAZARDOUS SUBSTANCE which should be handled by trained staff only.

Storage: 4 °C, -20 °C

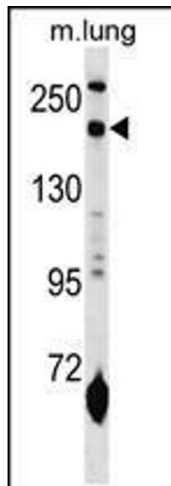
Storage Comment: Store at 4°C for three months and -20°C, stable for up to one year. As with all antibodies care should be taken to avoid repeated freeze thaw cycles. Antibodies should not be exposed to prolonged high temperatures.

## Images



### Western Blotting

**Image 1.** Western Blot at 1:2000 dilution Lane 1: human lung lysates Lane 2: human spleen lysates Lane 3: human placenta lysates Lysates/proteins at 20 ug per lane.



### Western Blotting

**Image 2.** Western blot analysis in mouse lung tissue lysates (35ug/lane).