

Datasheet for ABIN5530815
anti-CEP72 antibody (AA 231-259)[Go to Product page](#)

1 Image

Overview

Quantity:	400 µL
Target:	CEP72
Binding Specificity:	AA 231-259
Reactivity:	Human
Host:	Rabbit
Clonality:	Polyclonal
Conjugate:	This CEP72 antibody is un-conjugated
Application:	Western Blotting (WB)

Product Details

Immunogen:	This CEP72 antibody is generated from rabbits immunized with a KLH conjugated synthetic peptide between 231-259 amino acids from the Central region of human CEP72.
Isotype:	Ig Fraction
Purification:	This antibody is purified through a protein A column, followed by peptide affinity purification.

Target Details

Target:	CEP72
Alternative Name:	CEP72 (CEP72 Products)
Background:	CEP72 is a member of the leucine-rich-repeat (LRR) superfamily of proteins. The protein is localized to the centrosome, a non-membraneous organelle that functions as the major microtubule-organizing center in animal cells.

Target Details

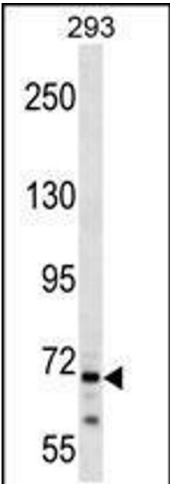
Molecular Weight:	72 kDa
Gene ID:	55722
UniProt:	Q9P209
Pathways:	M Phase

Application Details

Application Notes:	For WB starting dilution is: 1:1000
Restrictions:	For Research Use only

Handling

Format:	Liquid
Concentration:	0.5 mg/mL
Buffer:	Supplied in PBS with 0.09 % (W/V) sodium azide.
Preservative:	Sodium azide
Precaution of Use:	This product contains Sodium azide: a POISONOUS AND HAZARDOUS SUBSTANCE which should be handled by trained staff only.
Storage:	4 °C,-20 °C
Storage Comment:	Store at 4°C for three months and -20°C, stable for up to one year. As with all antibodies care should be taken to avoid repeated freeze thaw cycles. Antibodies should not be exposed to prolonged high temperatures.



Western Blotting

Image 1. Western blot analysis in 293 cell line lysates (35ug/lane).