



[Go to Product page](#)

Datasheet for ABIN5530822
anti-Chordin antibody (C-Term)

2 Images

Overview

Quantity:	400 µL
Target:	Chordin (CHRD)
Binding Specificity:	AA 926-955, C-Term
Reactivity:	Human
Host:	Rabbit
Clonality:	Polyclonal
Conjugate:	This Chordin antibody is un-conjugated
Application:	Western Blotting (WB), Immunohistochemistry (Paraffin-embedded Sections) (IHC (p))

Product Details

Immunogen:	This CHRD antibody is generated from rabbits immunized with a KLH conjugated synthetic peptide between 926-955 amino acids from the C-terminal region of human CHRD.
Isotype:	Ig Fraction
Purification:	This antibody is purified through a protein A column, followed by peptide affinity purification.

Target Details

Target:	Chordin (CHRD)
Alternative Name:	CHRD (CHRD Products)
Background:	CHRD is a secreted protein that dorsalizes early vertebrate embryonic tissues by binding to ventralizing TGF-beta-like bone morphogenetic proteins and sequestering them in latent complexes. This protein may also have roles in organogenesis and during adulthood.

Target Details

Molecular Weight: 102 kDa

Gene ID: 8646

UniProt: [Q9H2X0](#)

Application Details

Application Notes: For WB starting dilution is: 1:1000

For IHC-P starting dilution is: 1:10~50

Restrictions: For Research Use only

Handling

Format: Liquid

Concentration: 0.5 mg/mL

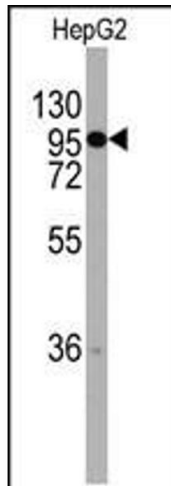
Buffer: Supplied in PBS with 0.09 % (W/V) sodium azide.

Preservative: Sodium azide

Precaution of Use: This product contains Sodium azide: a POISONOUS AND HAZARDOUS SUBSTANCE which should be handled by trained staff only.

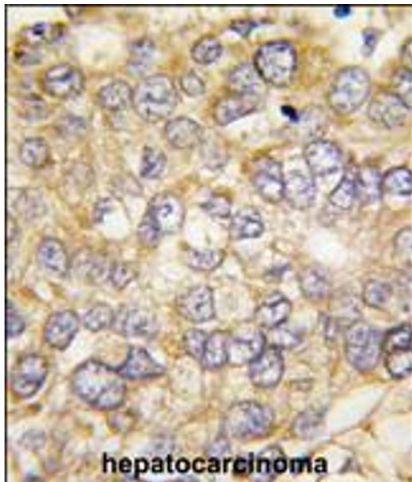
Storage: 4 °C,-20 °C

Storage Comment: Store at 4°C for three months and -20°C, stable for up to one year. As with all antibodies care should be taken to avoid repeated freeze thaw cycles. Antibodies should not be exposed to prolonged high temperatures.



Western Blotting

Image 1. Western blot analysis of anti-CHRD Antibody in HepG2 cell line lysates (35ug/lane)



Immunohistochemistry

Image 2. Formalin-fixed and paraffin-embedded human hepatocarcinoma tissue reacted with CHRD antibody, which was peroxidase-conjugated to the secondary antibody, followed by DAB staining.