

Datasheet for ABIN5530828  
**anti-CSNK1A1 antibody (C-Term)**



[Go to Product page](#)

3 Images

## Overview

Quantity:	400 µL
Target:	CSNK1A1
Binding Specificity:	AA 309-337, C-Term
Reactivity:	Human, Mouse
Host:	Rabbit
Clonality:	Polyclonal
Conjugate:	This CSNK1A1 antibody is un-conjugated
Application:	Western Blotting (WB), Flow Cytometry (FACS)

## Product Details

Immunogen:	This Mouse Csnk1a1 antibody is generated from rabbits immunized with a KLH conjugated synthetic peptide between 309-337 amino acids from the C-terminal region of mouse Csnk1a1.
Isotype:	Ig Fraction
Purification:	This antibody is purified through a protein A column, followed by peptide affinity purification.

## Target Details

Target:	CSNK1A1
Alternative Name:	Csnk1a1 ( <a href="#">CSNK1A1 Products</a> )
Background:	Casein kinases are operationally defined by their preferential utilization of acidic proteins such as caseins as substrates. It can phosphorylate a large number of proteins. Participates in Wnt signaling. Phosphorylates CTNNB1 at 'Ser-45'. May play a role in segregating chromosomes

## Target Details

---

during mitosis (By similarity).

Molecular Weight: 39 kDa

Gene ID: 93687

UniProt: [Q8BK63](#)

Pathways: [WNT Signaling](#), [Hedgehog Signaling](#)

## Application Details

---

Application Notes: For WB starting dilution is: 1:1000

For FACS starting dilution is: 1:10~50

Restrictions: For Research Use only

## Handling

---

Format: Liquid

Concentration: 0.5 mg/mL

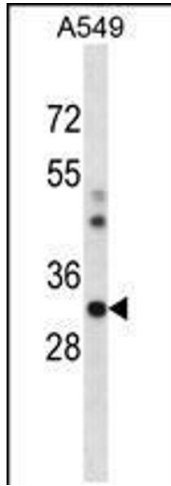
Buffer: Supplied in PBS with 0.09 % (W/V) sodium azide.

Preservative: Sodium azide

Precaution of Use: This product contains Sodium azide: a POISONOUS AND HAZARDOUS SUBSTANCE which should be handled by trained staff only.

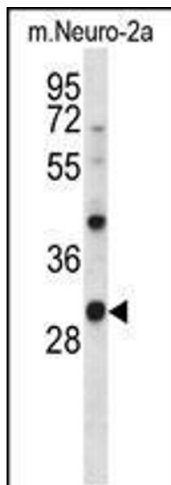
Storage: 4 °C,-20 °C

Storage Comment: Store at 4°C for three months and -20°C, stable for up to one year. As with all antibodies care should be taken to avoid repeated freeze thaw cycles. Antibodies should not be exposed to prolonged high temperatures.



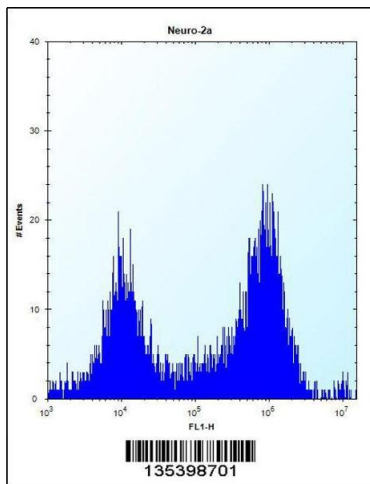
### Western Blotting

**Image 1.** Western blot analysis in A549 cell line lysates (35ug/lane).



### Western Blotting

**Image 2.** Western blot analysis in mouse Neuro-2a cell line lysates (35ug/lane).



### Flow Cytometry

**Image 3.** Flow cytometric analysis of Neuro-2a cells (right histogram) compared to a negative control cell (left histogram). FITC-conjugated donkey-anti-rabbit secondary antibodies were used for the analysis.