

Datasheet for ABIN5530891

anti-Cardiotrophin 1 antibody (C-Term)**3** Images[Go to Product page](#)

Overview

Quantity:	400 µL
Target:	Cardiotrophin 1 (CTF1)
Binding Specificity:	AA 166-194, C-Term
Reactivity:	Human
Host:	Rabbit
Clonality:	Polyclonal
Conjugate:	This Cardiotrophin 1 antibody is un-conjugated
Application:	Western Blotting (WB), Flow Cytometry (FACS), Immunohistochemistry (Paraffin-embedded Sections) (IHC (p))

Product Details

Immunogen:	This CTF1 antibody is generated from rabbits immunized with a KLH conjugated synthetic peptide between 166-194 amino acids from the C-terminal region of human CTF1.
Isotype:	Ig Fraction
Purification:	This antibody is purified through a protein A column, followed by peptide affinity purification.

Target Details

Target:	Cardiotrophin 1 (CTF1)
Alternative Name:	CTF1 (CTF1 Products)
Background:	The protein encoded by this gene is a secreted cytokine that induces cardiac myocyte hypertrophy in vitro. It has been shown to bind and activate the ILST/gp130 receptor. Two

Target Details

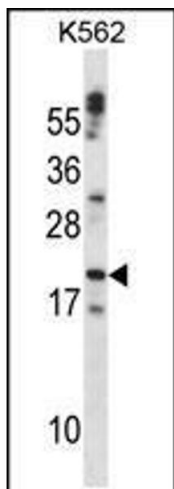
	transcript variants encoding different isoforms have been found for this gene.
Molecular Weight:	21 kDa
Gene ID:	1489
UniProt:	Q16619
Pathways:	JAK-STAT Signaling

Application Details

Application Notes:	For WB starting dilution is: 1:1000
	For FACS starting dilution is: 1:10~50
	For IHC-P starting dilution is: 1:10~50
Restrictions:	For Research Use only

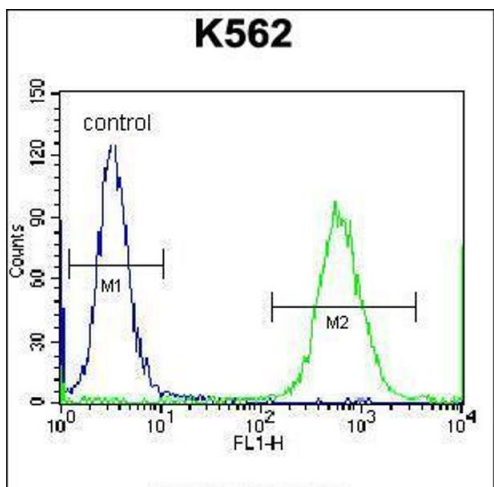
Handling

Format:	Liquid
Concentration:	0.5 mg/mL
Buffer:	Supplied in PBS with 0.09 % (W/V) sodium azide.
Preservative:	Sodium azide
Precaution of Use:	This product contains Sodium azide: a POISONOUS AND HAZARDOUS SUBSTANCE which should be handled by trained staff only.
Storage:	4 °C, -20 °C
Storage Comment:	Store at 4°C for three months and -20°C, stable for up to one year. As with all antibodies care should be taken to avoid repeated freeze thaw cycles. Antibodies should not be exposed to prolonged high temperatures.



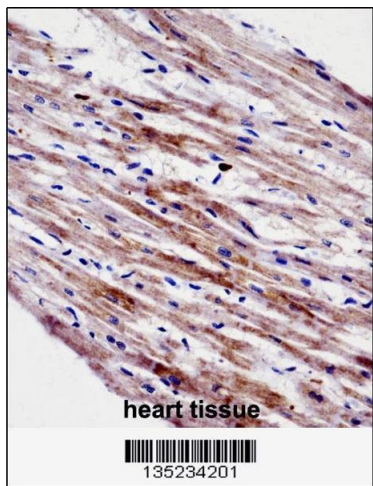
Western Blotting

Image 1. Western blot analysis in K562 cell line lysates (35ug/lane).



Flow Cytometry

Image 2. Flow cytometric analysis of K562 cells (right histogram) compared to a negative control cell (left histogram). FITC-conjugated donkey-anti-rabbit secondary antibodies were used for the analysis.



Immunohistochemistry

Image 3. CTF1 Antibody immunohistochemistry analysis in formalin fixed and paraffin embedded human heart tissue followed by peroxidase conjugation of the secondary antibody and DAB staining.