

Datasheet for ABIN5530908
anti-CLCN2 antibody (N-Term)[Go to Product page](#)

2 Images

Overview

Quantity:	400 µL
Target:	CLCN2
Binding Specificity:	AA 209-237, N-Term
Reactivity:	Human, Mouse
Host:	Rabbit
Clonality:	Polyclonal
Conjugate:	This CLCN2 antibody is un-conjugated
Application:	Western Blotting (WB)

Product Details

Immunogen:	This CLCN2 antibody is generated from rabbits immunized with a KLH conjugated synthetic peptide between 209-237 amino acids from the N-terminal region of human CLCN2.
Isotype:	Ig Fraction
Purification:	This antibody is purified through a protein A column, followed by peptide affinity purification.

Target Details

Target:	CLCN2
Alternative Name:	CLCN2 (CLCN2 Products)
Background:	The transmembrane protein encoded by this gene is a voltage-gated chloride channel that maintains chloride ion homeostasis in various cells. Defects in this gene may be a cause of certain epilepsies. Four transcript variants encoding different isoforms have been found for this

Target Details

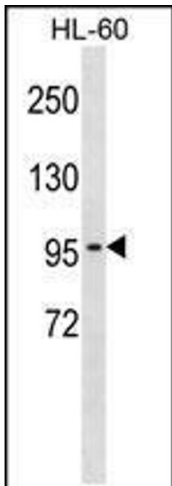
	gene.
Molecular Weight:	99 kDa
Gene ID:	1181
UniProt:	P51788

Application Details

Application Notes:	For WB starting dilution is: 1:1000
Restrictions:	For Research Use only

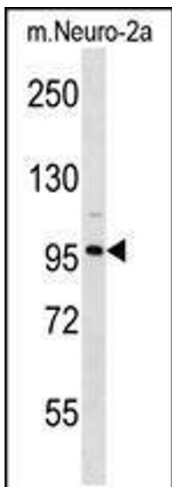
Handling

Format:	Liquid
Concentration:	0.45 mg/mL
Buffer:	Supplied in PBS with 0.09 % (W/V) sodium azide.
Preservative:	Sodium azide
Precaution of Use:	This product contains Sodium azide: a POISONOUS AND HAZARDOUS SUBSTANCE which should be handled by trained staff only.
Storage:	4 °C,-20 °C
Storage Comment:	Store at 4°C for three months and -20°C, stable for up to one year. As with all antibodies care should be taken to avoid repeated freeze thaw cycles. Antibodies should not be exposed to prolonged high temperatures.



Western Blotting

Image 1. Western blot analysis in HL-60 cell line lysates (35ug/lane).



Western Blotting

Image 2. Western blot analysis in mouse Neuro-2a cell line lysates (35ug/lane).