

Datasheet for ABIN5530920  
**anti-Claudin 15 antibody (AA 128-157)**

## 2 Images

[Go to Product page](#)

## Overview

Quantity:	400 µL
Target:	Claudin 15 (CLDN15)
Binding Specificity:	AA 128-157
Reactivity:	Human
Host:	Rabbit
Clonality:	Polyclonal
Conjugate:	This Claudin 15 antibody is un-conjugated
Application:	Western Blotting (WB), Flow Cytometry (FACS)

## Product Details

Immunogen:	This CLDN15 antibody is generated from rabbits immunized with a KLH conjugated synthetic peptide between 128-157 amino acids from the Central region of human CLDN15.
Isotype:	Ig Fraction
Purification:	This antibody is purified through a protein A column, followed by peptide affinity purification.

## Target Details

Target:	Claudin 15 (CLDN15)
Alternative Name:	CLDN15 ( <a href="#">CLDN15 Products</a> )
Background:	Plays a major role in tight junction specific obliteration of the intercellular space, through calcium independent cell adhesion activity

## Target Details

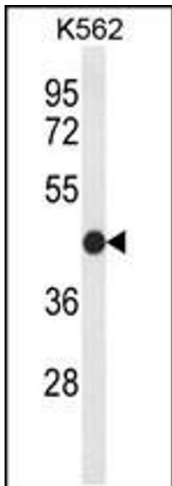
Molecular Weight:	24 kDa
Gene ID:	24146
UniProt:	<a href="#">P56746</a>
Pathways:	<a href="#">Cell-Cell Junction Organization</a> , <a href="#">Hepatitis C</a>

## Application Details

Application Notes:	For WB starting dilution is: 1:1000  For FACS starting dilution is: 1:10~50
Restrictions:	For Research Use only

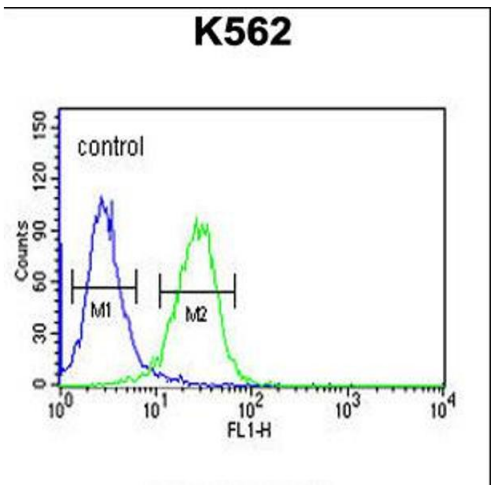
## Handling

Format:	Liquid
Concentration:	0.37 mg/mL
Buffer:	Supplied in PBS with 0.09 % (W/V) sodium azide.
Preservative:	Sodium azide
Precaution of Use:	This product contains Sodium azide: a POISONOUS AND HAZARDOUS SUBSTANCE which should be handled by trained staff only.
Storage:	4 °C, -20 °C
Storage Comment:	Store at 4°C for three months and -20°C, stable for up to one year. As with all antibodies care should be taken to avoid repeated freeze thaw cycles. Antibodies should not be exposed to prolonged high temperatures.



### Western Blotting

**Image 1.** Western blot analysis of CLDN15 Antibody in K562 cell line lysates (35ug/lane)



### Flow Cytometry

**Image 2.** Flow cytometric analysis of K562 cells (right histogram) compared to a negative control cell (left histogram).FITC-conjugated goat-anti-rabbit secondary antibodies were used for the analysis.