

Datasheet for ABIN5530945  
**anti-G-CSF antibody (AA 252-280)**[Go to Product page](#)

## 3 Images

## Overview

|                      |   |
|----------------------|---|
| Quantity:            | 400 µL  |
| Target:              | G-CSF (CSF3)  |
| Binding Specificity: | AA 252-280  |
| Reactivity:          | Human   |
| Host:                | Rabbit  |
| Clonality:           | Polyclonal  |
| Conjugate:           | This G-CSF antibody is un-conjugated  |
| Application:         | Western Blotting (WB), Flow Cytometry (FACS), Immunohistochemistry (Paraffin-embedded Sections) (IHC (p)) |

## Product Details

|               |   |
|---------------|---|
| Immunogen:    | This CSF3R antibody is generated from rabbits immunized with a KLH conjugated synthetic peptide between 252-280 amino acids from the Central region of human CSF3R. |
| Isotype:      | Ig Fraction   |
| Purification: | This antibody is purified through a protein A column, followed by peptide affinity purification.  |

## Target Details

|                   |  |
|-------------------|--|
| Target:           | G-CSF (CSF3)   |
| Alternative Name: | CSF3 ( <a href="#">CSF3 Products</a> )   |
| Background:       | CSF3R is the receptor for colony stimulating factor 3, a cytokine that controls the production, differentiation, and function of granulocytes. The encoded protein, which is a member of the |

## Target Details

family of cytokine receptors, may also function in some cell surface adhesion or recognition processes. Four transcript variants encoding four different isoforms have been found for this gene, with three of the isoforms being membrane-bound and the other being secreted and soluble.

Molecular Weight: 92 kDa

Gene ID: 1441

UniProt: [Q99062](#)

Pathways: [Cellular Response to Molecule of Bacterial Origin, Regulation of Actin Filament Polymerization](#)

## Application Details

Application Notes: For WB starting dilution is: 1:1000

For IHC-P starting dilution is: 1:10~50

For FACS starting dilution is: 1:10~50

Restrictions: For Research Use only

## Handling

Format: Liquid

Concentration: 0.5 mg/mL

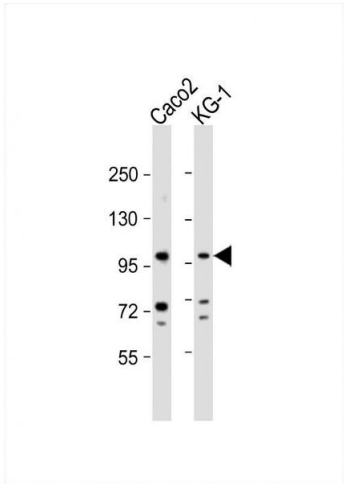
Buffer: Supplied in PBS with 0.09 % (W/V) sodium azide.

Preservative: Sodium azide

Precaution of Use: This product contains Sodium azide: a POISONOUS AND HAZARDOUS SUBSTANCE which should be handled by trained staff only.

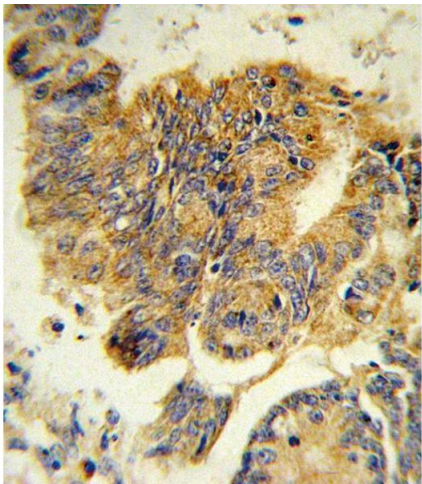
Storage: 4 °C, -20 °C

Storage Comment: Store at 4°C for three months and -20°C, stable for up to one year. As with all antibodies care should be taken to avoid repeated freeze thaw cycles. Antibodies should not be exposed to prolonged high temperatures.



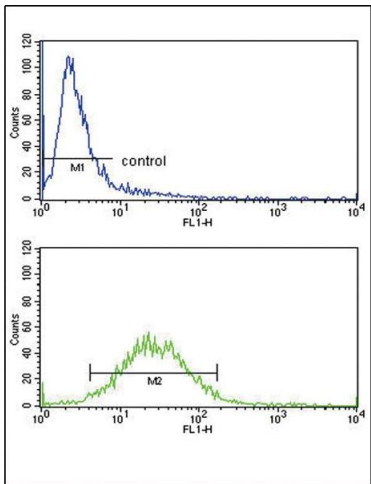
### Western Blotting

**Image 1.** Western Blot at 1:1000 dilution Lane 1: Caco2 whole cell lysate Lane 2: KG-1 whole cell lysate Lysates/proteins at 20 ug per lane.



### Immunohistochemistry

**Image 2.** Formalin-fixed and paraffin-embedded human colon carcinoma reacted with CSF3R Antibody , which was peroxidase-conjugated to the secondary antibody, followed by DAB staining.



### Flow Cytometry

**Image 3.** Flow cytometric analysis of ZR-75-1 cells (bottom histogram) compared to a negative control cell (top histogram). FITC-conjugated goat-anti-rabbit secondary antibodies were used for the analysis.