



[Go to Product page](#)

Datasheet for ABIN5530978
anti-C4BPB antibody (AA 125-153)

2 Images

Overview

Quantity:	400 µL
Target:	C4BPB
Binding Specificity:	AA 125-153
Reactivity:	Human
Host:	Rabbit
Clonality:	Polyclonal
Conjugate:	This C4BPB antibody is un-conjugated
Application:	Western Blotting (WB)

Product Details

Immunogen:	This C4BPB antibody is generated from rabbits immunized with a KLH conjugated synthetic peptide between 125-153 amino acids from the Central region of human C4BPB.
Isotype:	Ig Fraction
Purification:	This antibody is purified through a protein A column, followed by peptide affinity purification.

Target Details

Target:	C4BPB
Alternative Name:	C4BPB (C4BPB Products)
Background:	This gene encodes a member of a superfamily of proteins composed predominantly of tandemly arrayed short consensus repeats of approximately 60 amino acids. A single, unique beta-chain encoded by this gene assembles with seven identical alpha-chains into the

Target Details

predominant isoform of C4b-binding protein, a multimeric protein that controls activation of the complement cascade through the classical pathway. C4b-binding protein has a regulatory role in the coagulation system also, mediated through the beta-chain binding of protein S, a vitamin K-dependent protein that serves as a cofactor of activated protein C. The genes encoding both alpha and beta chains are located adjacent to each other on human chromosome 1 in the regulator of complement activation gene cluster. Alternative splicing gives rise to multiple transcript variants.

Molecular Weight: 28 kDa

Gene ID: 725

UniProt: [P20851](#)

Pathways: [Complement System](#)

Application Details

Application Notes: For WB starting dilution is: 1:1000

Restrictions: For Research Use only

Handling

Format: Liquid

Concentration: 0.4 mg/mL

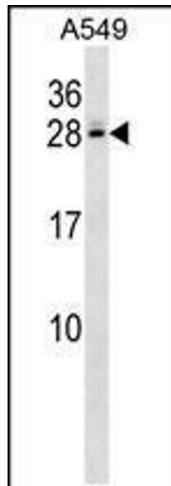
Buffer: Supplied in PBS with 0.09 % (W/V) sodium azide.

Preservative: Sodium azide

Precaution of Use: This product contains Sodium azide: a POISONOUS AND HAZARDOUS SUBSTANCE which should be handled by trained staff only.

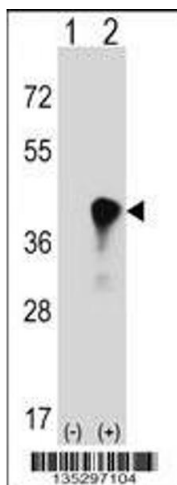
Storage: 4 °C,-20 °C

Storage Comment: Store at 4°C for three months and -20°C, stable for up to one year. As with all antibodies care should be taken to avoid repeated freeze thaw cycles. Antibodies should not be exposed to prolonged high temperatures.



Western Blotting

Image 1. Western blot analysis in A549 cell line lysates (35ug/lane).



Western Blotting

Image 2. Western blot analysis of C4BPB using rabbit polyclonal C4BPB Antibody using 293 cell lysates (2 ug/lane) either nontransfected (Lane 1) or transiently transfected (Lane 2) with the C4BPB gene.