

Datasheet for ABIN5530980  
**anti-Cytohesin 1 antibody (N-Term)**



[Go to Product page](#)

1 Image

## Overview

Quantity:	400 µL
Target:	Cytohesin 1 (CYTH1)
Binding Specificity:	AA 37-65, N-Term
Reactivity:	Human
Host:	Rabbit
Clonality:	Polyclonal
Conjugate:	This Cytohesin 1 antibody is un-conjugated
Application:	Western Blotting (WB)

## Product Details

Immunogen:	This CYTH1 antibody is generated from rabbits immunized with a KLH conjugated synthetic peptide between 37-65 amino acids from the N-terminal region of human CYTH1.
Isotype:	Ig Fraction
Purification:	This antibody is purified through a protein A column, followed by peptide affinity purification.

## Target Details

Target:	Cytohesin 1 (CYTH1)
Alternative Name:	CYTH1 ( <a href="#">CYTH1 Products</a> )
Background:	The protein encoded by this gene is a member of the PSCD family. Members of this family have identical structural organization that consists of an N-terminal coiled-coil motif, a central Sec7 domain, and a C-terminal pleckstrin homology (PH) domain. The coiled-coil motif is involved in

## Target Details

---

homodimerization, the Sec7 domain contains guanine-nucleotide exchange protein (GEP) activity, and the PH domain interacts with phospholipids and is responsible for association of PSCDs with membranes. Members of this family appear to mediate the regulation of protein sorting and membrane trafficking. This gene is highly expressed in natural killer and peripheral T cells, and regulates the adhesiveness of integrins at the plasma membrane of lymphocytes. The encoded protein is 83 % homologous to that of CYTH2.

---

Molecular Weight: 46 kDa

---

Gene ID: 9267

---

UniProt: [Q15438](#)

## Application Details

---

---

Application Notes: For WB starting dilution is: 1:1000

---

Restrictions: For Research Use only

## Handling

---

---

Format: Liquid

---

Concentration: 0.5 mg/mL

---

Buffer: Supplied in PBS with 0.09 % (W/V) sodium azide.

---

Preservative: Sodium azide

---

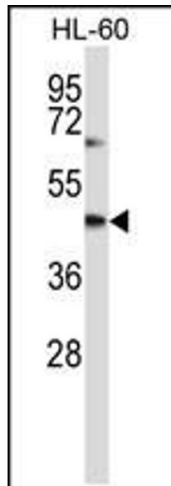
Precaution of Use: This product contains Sodium azide: a POISONOUS AND HAZARDOUS SUBSTANCE which should be handled by trained staff only.

---

Storage: 4 °C, -20 °C

---

Storage Comment: Store at 4°C for three months and -20°C, stable for up to one year. As with all antibodies care should be taken to avoid repeated freeze thaw cycles. Antibodies should not be exposed to prolonged high temperatures.



### Western Blotting

**Image 1.** Western blot analysis in HL-60 cell line lysates (35ug/lane).