



[Go to Product page](#)

Datasheet for ABIN5531008

anti-Desmoglein 1 antibody (AA 471-499)

2 Images

Overview

Quantity:	400 µL
Target:	Desmoglein 1 (DSG1)
Binding Specificity:	AA 471-499
Reactivity:	Human
Host:	Rabbit
Clonality:	Polyclonal
Conjugate:	This Desmoglein 1 antibody is un-conjugated
Application:	Western Blotting (WB), Immunohistochemistry (Paraffin-embedded Sections) (IHC (p))

Product Details

Immunogen:	This DSG1 antibody is generated from rabbits immunized with a KLH conjugated synthetic peptide between 471-499 amino acids from the Central region of human DSG1.
Isotype:	Ig Fraction
Purification:	This antibody is purified through a protein A column, followed by peptide affinity purification.

Target Details

Target:	Desmoglein 1 (DSG1)
Alternative Name:	DSG1 (DSG1 Products)
Background:	Desmosomes are cell-cell junctions between epithelial, myocardial and certain other cell types. Desmoglein 1 is a calcium-binding transmembrane glycoprotein component of desmosomes in vertebrate epithelial cells. Currently, three desmoglein subfamily members have been identified

Target Details

and all are members of the cadherin cell adhesion molecule superfamily. These desmoglein gene family members are located in a cluster on chromosome 18. The protein encoded by this gene has been identified as the autoantigen of the autoimmune skin blistering disease pemphigus foliaceus.

Molecular Weight: 114 kDa

Gene ID: 1828

UniProt: [Q02413](#)

Pathways: [Cell-Cell Junction Organization](#)

Application Details

Application Notes: For WB starting dilution is: 1:1000

For IHC-P starting dilution is: 1:10~50

Restrictions: For Research Use only

Handling

Format: Liquid

Concentration: 0.5 mg/mL

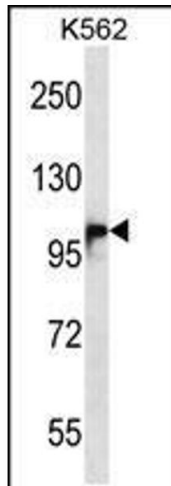
Buffer: Supplied in PBS with 0.09 % (W/V) sodium azide.

Preservative: Sodium azide

Precaution of Use: This product contains Sodium azide: a POISONOUS AND HAZARDOUS SUBSTANCE which should be handled by trained staff only.

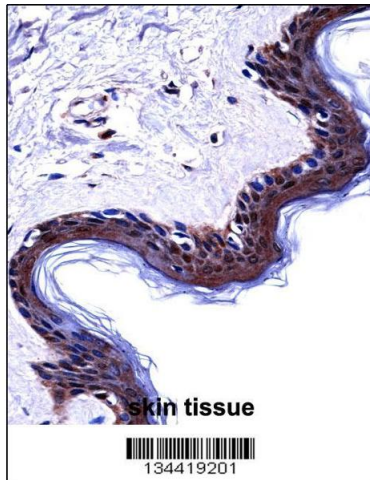
Storage: 4 °C,-20 °C

Storage Comment: Store at 4°C for three months and -20°C, stable for up to one year. As with all antibodies care should be taken to avoid repeated freeze thaw cycles. Antibodies should not be exposed to prolonged high temperatures.



Western Blotting

Image 1. Western blot analysis in K562 cell line lysates (35ug/lane).



Immunohistochemistry

Image 2. DSG1 Antibody immunohistochemistry analysis in formalin fixed and paraffin embedded human skin tissue followed by peroxidase conjugation of the secondary antibody and DAB staining.