



[Go to Product page](#)

Datasheet for ABIN5531011
anti-DIO2 antibody (AA 165-191)

3 Images

Overview

Quantity:	400 µL
Target:	DIO2
Binding Specificity:	AA 165-191
Reactivity:	Human
Host:	Rabbit
Clonality:	Polyclonal
Conjugate:	This DIO2 antibody is un-conjugated
Application:	Western Blotting (WB), Immunohistochemistry (Paraffin-embedded Sections) (IHC (p)), Flow Cytometry (FACS)

Product Details

Immunogen:	This DIO2 antibody is generated from rabbits immunized with a KLH conjugated synthetic peptide between 165-191 amino acids from the Central region of human DIO2.
Isotype:	Ig Fraction
Purification:	This antibody is purified through a protein A column, followed by peptide affinity purification.

Target Details

Target:	DIO2
Alternative Name:	DIO2 (DIO2 Products)
Background:	DIO2 belongs to the iodothyronine deiodinase family. It activates thyroid hormone by converting the prohormone thyroxine (T4) by outer ring deiodination (ORD) to bioactive 3,3',5-

Target Details

triiodothyronine (T3).

Molecular Weight: 31 kDa

Gene ID: 1734

UniProt: [Q92813](#)

Pathways: [Hormone Transport, Hormone Activity](#)

Application Details

Application Notes: For WB starting dilution is: 1:1000

For IHC-P starting dilution is: 1:50~100

For FACS starting dilution is: 1:10~50

Restrictions: For Research Use only

Handling

Format: Liquid

Concentration: 0.5 mg/mL

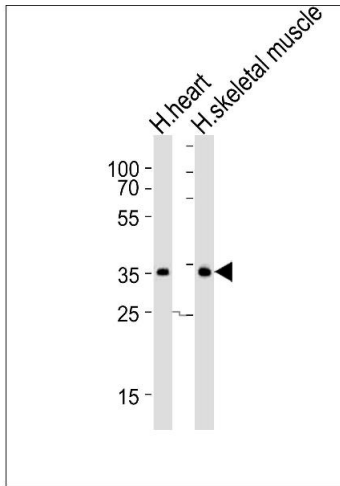
Buffer: Supplied in PBS with 0.09 % (W/V) sodium azide.

Preservative: Sodium azide

Precaution of Use: This product contains Sodium azide: a POISONOUS AND HAZARDOUS SUBSTANCE which should be handled by trained staff only.

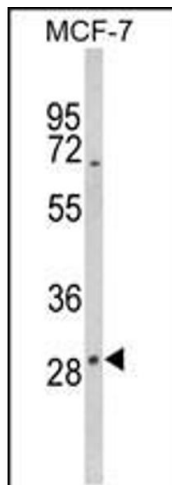
Storage: 4 °C, -20 °C

Storage Comment: Store at 4°C for three months and -20°C, stable for up to one year. As with all antibodies care should be taken to avoid repeated freeze thaw cycles. Antibodies should not be exposed to prolonged high temperatures.



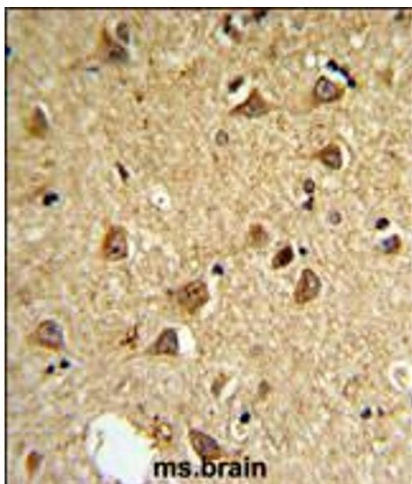
Western Blotting

Image 1. Western blot analysis of lysates from human heart and human skeletal muscle tissue lysate (from left to right), using DIO2 Antibody at 1:1000 at each lane.



Western Blotting

Image 2. Western blot analysis of DIO2 Antibody in MCF-7 cell line lysates (35ug/lane)



Immunohistochemistry

Image 3. DIO2 Antibody IHC analysis in formalin fixed and paraffin embedded mouse brain followed by peroxidase conjugation of the secondary antibody and DAB staining.