

Datasheet for ABIN5531036  
**anti-DPPA4 antibody (N-Term)**

## 3 Images

[Go to Product page](#)

## Overview

Quantity:	400 µL
Target:	DPPA4
Binding Specificity:	AA 50-79, N-Term
Reactivity:	Human
Host:	Rabbit
Clonality:	Polyclonal
Conjugate:	This DPPA4 antibody is un-conjugated
Application:	Western Blotting (WB), Immunohistochemistry (Paraffin-embedded Sections) (IHC (p))

## Product Details

Immunogen:	This DPPA4 antibody is generated from rabbits immunized with a KLH conjugated synthetic peptide between 50-79 amino acids from the N-terminal region of human DPPA4.
Isotype:	Ig Fraction
Purification:	This antibody is purified through a protein A column, followed by peptide affinity purification.

## Target Details

Target:	DPPA4
Alternative Name:	DPPA4 ( <a href="#">DPPA4 Products</a> )
Background:	Dppa4 is a member of the Dppa family of developmental pluripotency associated transcription factors. Dppa4 is a target of Oct4, Sox2 and Nanog. It may play a role in maintaining cell pluripotentiality.

## Target Details

Molecular Weight:	34 kDa
Gene ID:	55211
UniProt:	<a href="#">Q7L190</a>

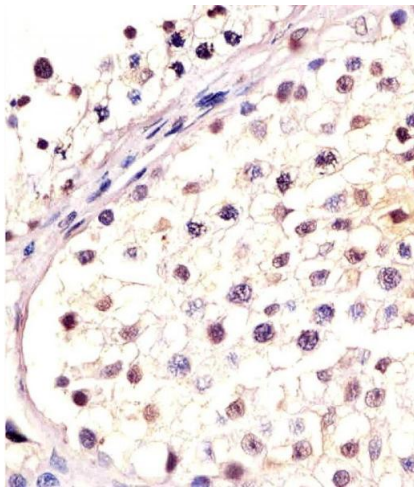
## Application Details

Application Notes:	For IHC-P starting dilution is: 1:25
	For WB starting dilution is: 1:1000

Restrictions:	For Research Use only
---------------	-----------------------

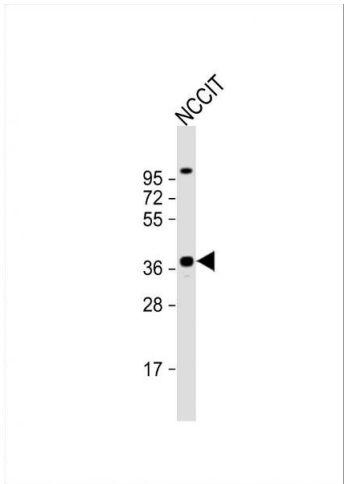
## Handling

Format:	Liquid
Concentration:	0.5 mg/mL
Buffer:	Supplied in PBS with 0.09 % (W/V) sodium azide.
Preservative:	Sodium azide
Precaution of Use:	This product contains Sodium azide: a POISONOUS AND HAZARDOUS SUBSTANCE which should be handled by trained staff only.
Storage:	4 °C,-20 °C
Storage Comment:	Store at 4°C for three months and -20°C, stable for up to one year. As with all antibodies care should be taken to avoid repeated freeze thaw cycles. Antibodies should not be exposed to prolonged high temperatures.



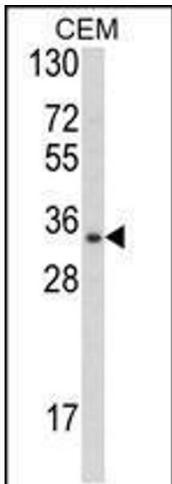
Immunohistochemistry

**Image 1.** Antibody staining DPPA4 in human testis tissue sections by Immunohistochemistry (IHC-P - paraformaldehyde-fixed, paraffin-embedded sections).



Western Blotting

**Image 2.** Western Blot at 1:2000 dilution + NCCIT whole cell lysate Lysates/proteins at 20 ug per lane.



Western Blotting

**Image 3.** Western blot analysis of DPPA4 Antibody in CEM cell line lysates (35ug/lane)