



[Go to Product page](#)

Datasheet for ABIN5531058

anti-Desmocollin 1 antibody (C-Term)

2 Images

Overview

Quantity:	400 µL
Target:	Desmocollin 1 (DSC1)
Binding Specificity:	AA 659-687, C-Term
Reactivity:	Human
Host:	Rabbit
Clonality:	Polyclonal
Conjugate:	This Desmocollin 1 antibody is un-conjugated
Application:	Western Blotting (WB), Flow Cytometry (FACS), Immunohistochemistry (Paraffin-embedded Sections) (IHC (p))

Product Details

Immunogen:	This DSC1 antibody is generated from rabbits immunized with a KLH conjugated synthetic peptide between 659-687 amino acids from the C-terminal region of human DSC1.
Isotype:	Ig Fraction
Purification:	This antibody is purified through a protein A column, followed by peptide affinity purification.

Target Details

Target:	Desmocollin 1 (DSC1)
Alternative Name:	DSC1 (DSC1 Products)
Background:	DSC1 is a calcium-dependent glycoprotein that is a member of the desmocollin subfamily of the cadherin superfamily. These desmosomal family members, along with the desmogleins, are

Target Details

found primarily in epithelial cells where they constitute the adhesive proteins of the desmosome cell-cell junction and are required for cell adhesion and desmosome formation. The desmosomal family members are arranged in two clusters on chromosome 18, occupying less than 650 kb combined.

Molecular Weight: 100 kDa

Gene ID: 1823

UniProt: [Q08554](#)

Application Details

Application Notes: For WB starting dilution is: 1:1000

For FACS starting dilution is: 1:10~50

Restrictions: For Research Use only

Handling

Format: Liquid

Concentration: 0.5 mg/mL

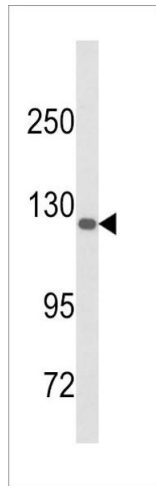
Buffer: Supplied in PBS with 0.09 % (W/V) sodium azide.

Preservative: Sodium azide

Precaution of Use: This product contains Sodium azide: a POISONOUS AND HAZARDOUS SUBSTANCE which should be handled by trained staff only.

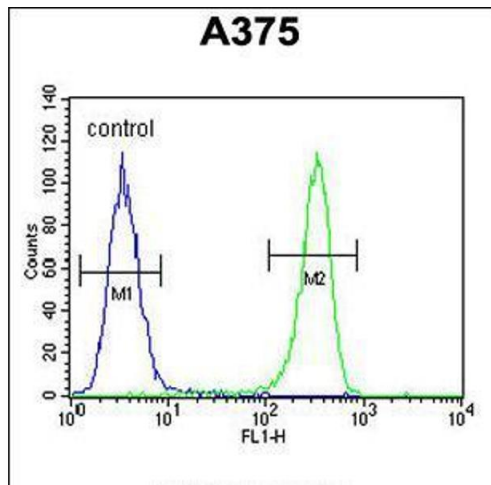
Storage: 4 °C, -20 °C

Storage Comment: Store at 4°C for three months and -20°C, stable for up to one year. As with all antibodies care should be taken to avoid repeated freeze thaw cycles. Antibodies should not be exposed to prolonged high temperatures.



Western Blotting

Image 1. Western blot analysis of DSC1 Antibody in A375 cell line lysates (35ug/lane)



Flow Cytometry

Image 2. Flow cytometric analysis of A375 cells (right histogram) compared to a negative control cell (left histogram). FITC-conjugated goat-anti-rabbit secondary antibodies were used for the analysis.