



[Go to Product page](#)

Datasheet for ABIN5531084
anti-SH2D1B antibody (AA 65-92)

3 Images

Overview

Quantity:	400 µL
Target:	SH2D1B
Binding Specificity:	AA 65-92
Reactivity:	Human
Host:	Rabbit
Clonality:	Polyclonal
Conjugate:	This SH2D1B antibody is un-conjugated
Application:	Western Blotting (WB), Immunohistochemistry (Paraffin-embedded Sections) (IHC (p)), Flow Cytometry (FACS)

Product Details

Immunogen:	This SH2D1B antibody is generated from rabbits immunized with a KLH conjugated synthetic peptide between 65-92 amino acids from the Central region of human SH2D1B.
Isotype:	Ig Fraction
Purification:	This antibody is purified through a protein A column, followed by peptide affinity purification.

Target Details

Target:	SH2D1B
Alternative Name:	SH2D1B (SH2D1B Products)
Background:	SH2D1B plays a role in controlling signal transduction through at least four receptors, CD84, CD150, CD229 and CD244, expressed on the surface of professional antigen-presenting cells.

Target Details

Molecular Weight:	15 kDa
Gene ID:	117157
UniProt:	O14796
Pathways:	Regulation of Leukocyte Mediated Immunity, Positive Regulation of Immune Effector Process

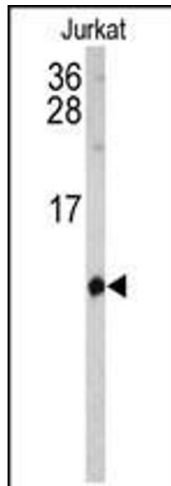
Application Details

Application Notes:	For WB starting dilution is: 1:1000
	For IHC-P starting dilution is: 1:50~100
	For FACS starting dilution is: 1:10~50

Restrictions:	For Research Use only
---------------	-----------------------

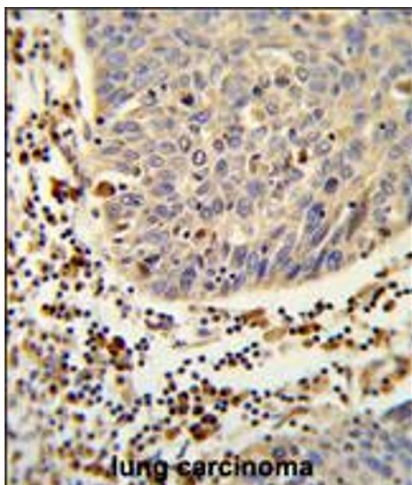
Handling

Format:	Liquid
Concentration:	0.35 mg/mL
Buffer:	Supplied in PBS with 0.09 % (W/V) sodium azide.
Preservative:	Sodium azide
Precaution of Use:	This product contains Sodium azide: a POISONOUS AND HAZARDOUS SUBSTANCE which should be handled by trained staff only.
Storage:	4 °C,-20 °C
Storage Comment:	Store at 4°C for three months and -20°C, stable for up to one year. As with all antibodies care should be taken to avoid repeated freeze thaw cycles. Antibodies should not be exposed to prolonged high temperatures.



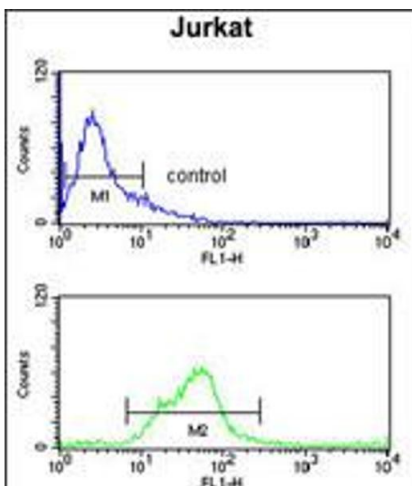
Western Blotting

Image 1. Western blot analysis of SH2D1B Antibody in Jurkat cell line lysates (35ug/lane)



Immunohistochemistry

Image 2. Formalin-fixed and paraffin-embedded human lung carcinoma reacted with SH2D1B Antibody, which was peroxidase-conjugated to the secondary antibody, followed by DAB staining.



Flow Cytometry

Image 3. Flow cytometry analysis of Jurkat cells (bottom histogram) compared to a negative control cell (top histogram). FITC-conjugated goat-anti-rabbit secondary antibodies were used for the analysis.