

Datasheet for ABIN5531087
anti-ECT2 antibody (AA 597-625)[Go to Product page](#)

2 Images

Overview

| | |
|----------------------|--|
| Quantity: | 400 µL |
| Target: | ECT2 |
| Binding Specificity: | AA 597-625 |
| Reactivity: | Human |
| Host: | Rabbit |
| Clonality: | Polyclonal |
| Conjugate: | This ECT2 antibody is un-conjugated |
| Application: | Western Blotting (WB), Immunohistochemistry (Paraffin-embedded Sections) (IHC (p)) |

Product Details

| | |
|---------------|---|
| Immunogen: | This ECT2 antibody is generated from rabbits immunized with a KLH conjugated synthetic peptide between 597-625 amino acids from the Central region of human ECT2. |
| Isotype: | Ig Fraction |
| Purification: | This antibody is purified through a protein A column, followed by peptide affinity purification. |

Target Details

| | |
|-------------------|---|
| Target: | ECT2 |
| Alternative Name: | ECT2 (ECT2 Products) |
| Background: | The protein encoded by this gene is a transforming protein that is related to Rho-specific exchange factors and yeast cell cycle regulators. The expression of this gene is elevated with the onset of DNA synthesis and remains elevated during G2 and M phases. In situ hybridization |

Target Details

analysis showed that expression is at a high level in cells undergoing mitosis in regenerating liver. Thus, this protein is expressed in a cell cycle-dependent manner during liver regeneration, and is thought to have an important role in the regulation of cytokinesis.

Molecular Weight: 104 kDa

Gene ID: 1894

UniProt: [Q9H8V3](#)

Pathways: [Neurotrophin Signaling Pathway](#), [Cell-Cell Junction Organization](#)

Application Details

Application Notes: For WB starting dilution is: 1:1000

For IHC-P starting dilution is: 1:10~50

Restrictions: For Research Use only

Handling

Format: Liquid

Concentration: 0.5 mg/mL

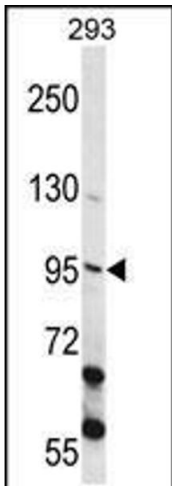
Buffer: Supplied in PBS with 0.09 % (W/V) sodium azide.

Preservative: Sodium azide

Precaution of Use: This product contains Sodium azide: a POISONOUS AND HAZARDOUS SUBSTANCE which should be handled by trained staff only.

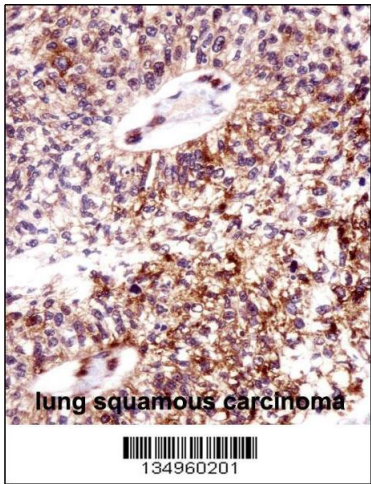
Storage: 4 °C, -20 °C

Storage Comment: Store at 4°C for three months and -20°C, stable for up to one year. As with all antibodies care should be taken to avoid repeated freeze thaw cycles. Antibodies should not be exposed to prolonged high temperatures.



Western Blotting

Image 1. Western blot analysis in 293 cell line lysates (35ug/lane).



Immunohistochemistry

Image 2. ECT2 Antibody immunohistochemistry analysis in formalin fixed and paraffin embedded human lung squamous carcinoma followed by peroxidase conjugation of the secondary antibody and DAB staining.