

Datasheet for ABIN5531136
anti-Endothelin 1 antibody (AA 111-138)



[Go to Product page](#)

3 Images

Overview

Quantity:	400 µL
Target:	Endothelin 1 (EDN1)
Binding Specificity:	AA 111-138
Reactivity:	Human
Host:	Rabbit
Clonality:	Polyclonal
Conjugate:	This Endothelin 1 antibody is un-conjugated
Application:	Western Blotting (WB), Immunofluorescence (IF), Immunohistochemistry (Paraffin-embedded Sections) (IHC (p)), Flow Cytometry (FACS)

Product Details

Immunogen:	This EDN1 antibody is generated from rabbits immunized with a KLH conjugated synthetic peptide between 111-138 amino acids from the Central region of human EDN1.
Isotype:	Ig Fraction
Purification:	This antibody is purified through a protein A column, followed by peptide affinity purification.

Target Details

Target:	Endothelin 1 (EDN1)
Alternative Name:	EDN1 (EDN1 Products)
Background:	The protein encoded by this gene is proteolytically processed to release a secreted peptide termed endothelin 1. This peptide is a potent vasoconstrictor and is produced by vascular

Target Details

endothelial cells. Endothelin 1 also can affect the central nervous system. Two transcript variants encoding different isoforms have been found for this gene.

Molecular Weight: 24 kDa

Gene ID: 1906

UniProt: [P05305](#)

Pathways: [Hormone Transport](#), [Negative Regulation of Hormone Secretion](#), [Regulation of Systemic Arterial Blood Pressure by Hormones](#), [cAMP Metabolic Process](#), [Regulation of Muscle Cell Differentiation](#), [Regulation of G-Protein Coupled Receptor Protein Signaling](#), [Regulation of Cell Size](#)

Application Details

Application Notes: For WB starting dilution is: 1:1000

For IHC-P starting dilution is: 1:50~100

For IF starting dilution is: 1:10~50

For FACS starting dilution is: 1:10~50

Restrictions: For Research Use only

Handling

Format: Liquid

Concentration: 0.41 mg/mL

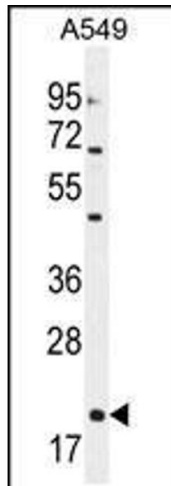
Buffer: Supplied in PBS with 0.09 % (W/V) sodium azide.

Preservative: Sodium azide

Precaution of Use: This product contains Sodium azide: a POISONOUS AND HAZARDOUS SUBSTANCE which should be handled by trained staff only.

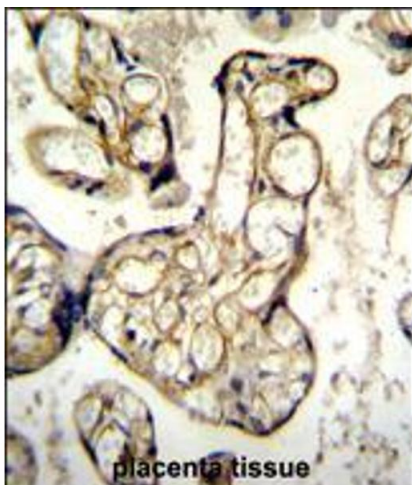
Storage: 4 °C, -20 °C

Storage Comment: Store at 4°C for three months and -20°C, stable for up to one year. As with all antibodies care should be taken to avoid repeated freeze thaw cycles. Antibodies should not be exposed to prolonged high temperatures.



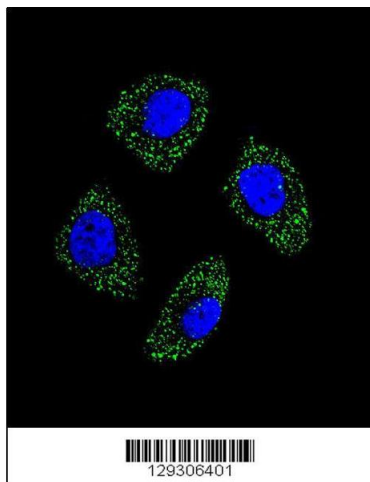
Western Blotting

Image 1. Western blot analysis in A549 cell line lysates (35ug/lane).



Immunohistochemistry

Image 2. EDN1 Antibody immunohistochemistry analysis in formalin fixed and paraffin embedded human placenta tissue followed by peroxidase conjugation of the secondary antibody and DAB staining.



Immunofluorescence

Image 3. Confocal immunofluorescent analysis of EDN1 Antibody with A549 cell followed by Alexa Fluor 488-conjugated goat anti-rabbit IgG (green). DAPI was used to stain the cell nuclear (blue).