

Datasheet for ABIN5531170  
**anti-FKBP10 antibody (N-Term)**[Go to Product page](#)

## 3 Images

## Overview

|                      |   |
|----------------------|---|
| Quantity:            | 400 µL  |
| Target:              | FKBP10  |
| Binding Specificity: | AA 57-87, N-Term  |
| Reactivity:          | Human   |
| Host:                | Rabbit  |
| Clonality:           | Polyclonal  |
| Conjugate:           | This FKBP10 antibody is un-conjugated   |
| Application:         | Western Blotting (WB), Flow Cytometry (FACS), Immunohistochemistry (Paraffin-embedded Sections) (IHC (p)) |

## Product Details

|               |  |
|---------------|--|
| Immunogen:    | This FKBP10 antibody is generated from rabbits immunized with a KLH conjugated synthetic peptide between 57-87 amino acids from the N-terminal region of human FKBP10. |
| Isotype:      | Ig Fraction  |
| Purification: | This antibody is purified through a protein A column, followed by peptide affinity purification.   |

## Target Details

|                   |   |
|-------------------|---|
| Target:           | FKBP10  |
| Alternative Name: | FKBP10 ( <a href="#">FKBP10 Products</a> )  |
| Background:       | The protein belongs to the FKBP-type peptidyl-prolyl cis/trans isomerase family. It is located in endoplasmic reticulum and acts as molecular chaperones. |

## Target Details

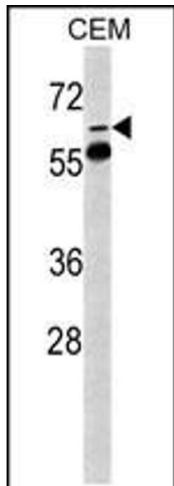
|                   |  |
|-------------------|--|
| Molecular Weight: | 64 kDa   |
| Gene ID:          | 60681  |
| UniProt:          | <a href="#">Q96AY3</a>                         |
| Pathways:         | <a href="#">SARS-CoV-2 Protein Interactome</a> |

## Application Details

|                    |  |
|--------------------|--|
| Application Notes: | For WB starting dilution is: 1:1000      |
|                    | For IHC-P starting dilution is: 1:50~100 |
|                    | For FACS starting dilution is: 1:10~50   |
| Restrictions:      | For Research Use only                    |

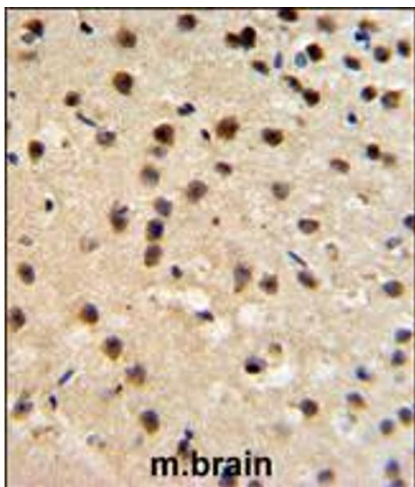
## Handling

|                    |  |
|--------------------|--|
| Format:            | Liquid   |
| Concentration:     | 0.37 mg/mL   |
| Buffer:            | Supplied in PBS with 0.09 % (W/V) sodium azide.  |
| Preservative:      | Sodium azide   |
| Precaution of Use: | This product contains Sodium azide: a POISONOUS AND HAZARDOUS SUBSTANCE which should be handled by trained staff only.   |
| Storage:           | 4 °C,-20 °C  |
| Storage Comment:   | Store at 4°C for three months and -20°C, stable for up to one year. As with all antibodies care should be taken to avoid repeated freeze thaw cycles. Antibodies should not be exposed to prolonged high temperatures. |



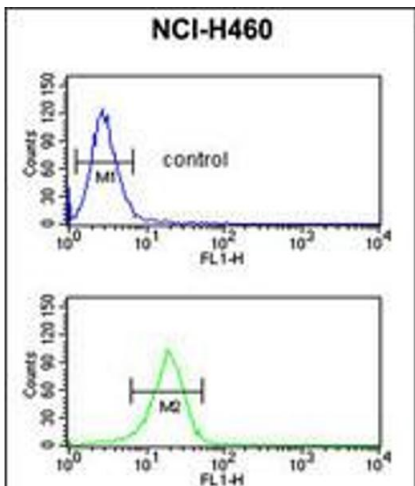
### Western Blotting

**Image 1.** Western blot analysis of FKBP10 Antibody in CEM cell line lysates (35ug/lane)



### Immunohistochemistry

**Image 2.** FKBP10 Antibody IHC analysis in formalin fixed and paraffin embedded mouse brain tissue followed by peroxidase conjugation of the secondary antibody and DAB staining.



### Flow Cytometry

**Image 3.** Flow cytometric analysis of NCI-H460 cells (bottom histogram) compared to a negative control cell (top histogram). FITC-conjugated goat-anti-rabbit secondary antibodies were used for the analysis.