



[Go to Product page](#)

Datasheet for ABIN5531214
anti-Fibulin 1 antibody (C-Term)

3 Images

Overview

Quantity:	400 µL
Target:	Fibulin 1 (FBLN1)
Binding Specificity:	AA 622-650, C-Term
Reactivity:	Human, Mouse
Host:	Rabbit
Clonality:	Polyclonal
Conjugate:	This Fibulin 1 antibody is un-conjugated
Application:	Western Blotting (WB), Immunohistochemistry (Paraffin-embedded Sections) (IHC (p))

Product Details

Immunogen:	This FBLN1 antibody is generated from rabbits immunized with a KLH conjugated synthetic peptide between 622-650 amino acids from the C-terminal region of human FBLN1.
Isotype:	Ig Fraction
Purification:	This antibody is purified through a protein A column, followed by peptide affinity purification.

Target Details

Target:	Fibulin 1 (FBLN1)
Alternative Name:	FBLN1 (FBLN1 Products)
Background:	Fibulin 1 is a secreted glycoprotein that becomes incorporated into a fibrillar extracellular matrix. Calcium-binding is apparently required to mediate its binding to laminin and nidogen. It mediates platelet adhesion via binding fibrinogen. Four splice variants which differ in the 3' end

Target Details

have been identified. Each variant encodes a different isoform, but no functional distinctions have been identified among the four variants.

Molecular Weight: 77 kDa

Gene ID: 2192

UniProt: [P23142](#)

Application Details

Application Notes: For WB starting dilution is: 1:1000

For IHC-P starting dilution is: 1:10~50

Restrictions: For Research Use only

Handling

Format: Liquid

Concentration: 0.5 mg/mL

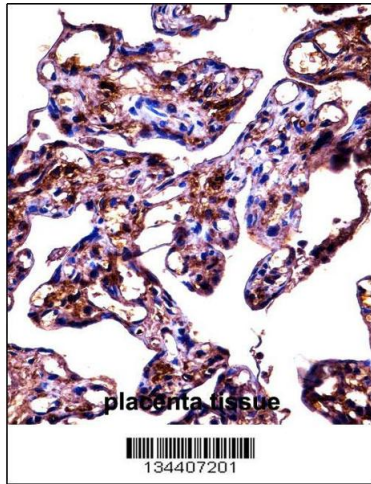
Buffer: Supplied in PBS with 0.09 % (W/V) sodium azide.

Preservative: Sodium azide

Precaution of Use: This product contains Sodium azide: a POISONOUS AND HAZARDOUS SUBSTANCE which should be handled by trained staff only.

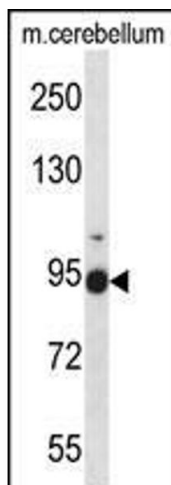
Storage: 4 °C, -20 °C

Storage Comment: Store at 4°C for three months and -20°C, stable for up to one year. As with all antibodies care should be taken to avoid repeated freeze thaw cycles. Antibodies should not be exposed to prolonged high temperatures.



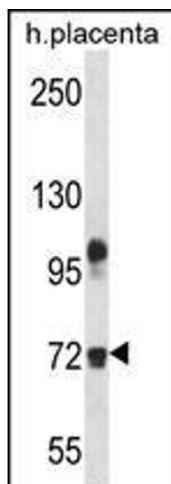
Immunohistochemistry

Image 1. FBLN1 Antibody immunohistochemistry analysis in formalin fixed and paraffin embedded human placenta tissue followed by peroxidase conjugation of the secondary antibody and DAB staining.



Western Blotting

Image 2. Western blot analysis in mouse cerebellum tissue lysates (35ug/lane).



Western Blotting

Image 3. Western blot analysis in human placenta tissue lysates (35ug/lane).