

Datasheet for ABIN5531255  
**anti-GFRA3 antibody (AA 116-144)**



[Go to Product page](#)

1 Image

## Overview

Quantity:	400 µL
Target:	GFRA3
Binding Specificity:	AA 116-144
Reactivity:	Human
Host:	Rabbit
Clonality:	Polyclonal
Conjugate:	This GFRA3 antibody is un-conjugated
Application:	Western Blotting (WB)

## Product Details

Immunogen:	This GFRA3 antibody is generated from rabbits immunized with a KLH conjugated synthetic peptide between 116-144 amino acids from the Central region of human GFRA3.
Isotype:	Ig Fraction
Purification:	This antibody is purified through a protein A column, followed by peptide affinity purification.

## Target Details

Target:	GFRA3
Alternative Name:	GFRA3 ( <a href="#">GFRA3 Products</a> )
Background:	GFRA3 is a glycosylphosphatidylinositol(GPI)-linked cell surface receptor and a member of the GDNF receptor family. It forms a signaling receptor complex with RET tyrosine kinase receptor and binds the ligand, artemin.

### Target Details

Molecular Weight:	45 kDa
Gene ID:	2676
UniProt:	<a href="#">O60609</a>

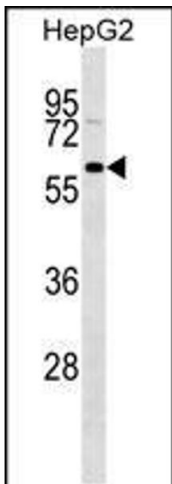
### Application Details

Application Notes:	For WB starting dilution is: 1:1000
Restrictions:	For Research Use only

### Handling

Format:	Liquid
Concentration:	0.5 mg/mL
Buffer:	Supplied in PBS with 0.09 % (W/V) sodium azide.
Preservative:	Sodium azide
Precaution of Use:	This product contains Sodium azide: a POISONOUS AND HAZARDOUS SUBSTANCE which should be handled by trained staff only.
Storage:	4 °C, -20 °C
Storage Comment:	Store at 4°C for three months and -20°C, stable for up to one year. As with all antibodies care should be taken to avoid repeated freeze thaw cycles. Antibodies should not be exposed to prolonged high temperatures.

### Images



#### Western Blotting

**Image 1.** Western blot analysis in HepG2 cell line lysates (35ug/lane).