

Datasheet for ABIN5531272
anti-GREM1 antibody (C-Term)[Go to Product page](#)

3 Images

Overview

Quantity:	400 µL
Target:	GREM1
Binding Specificity:	AA 147-175, C-Term
Reactivity:	Human, Mouse
Host:	Rabbit
Clonality:	Polyclonal
Conjugate:	This GREM1 antibody is un-conjugated
Application:	Western Blotting (WB), Immunohistochemistry (Paraffin-embedded Sections) (IHC (p))

Product Details

Immunogen:	This GREMLIN antibody is generated from rabbits immunized with a KLH conjugated synthetic peptide between 147-175 amino acids from the C-terminal region of mouse GREMLIN.
Isotype:	Ig Fraction
Purification:	This antibody is prepared by Saturated Ammonium Sulfate (SAS) precipitation followed by dialysis

Target Details

Target:	GREM1
Alternative Name:	GREMLIN (GREM1 Products)
Background:	GREMLIN is a member of the BMP (bone morphogenic protein) antagonist family. Like BMPs, BMP antagonists contain cystine knots and typically form homo- and heterodimers. The CAN

Target Details

(cerberus and dan) subfamily of BMP antagonists, to which this gene belongs, is characterized by a C-terminal cystine knot with an eight-membered ring. The antagonistic effect of the secreted glycosylated protein encoded by this gene is likely due to its direct binding to BMP proteins. As an antagonist of BMP, this gene may play a role in regulating organogenesis, body patterning, and tissue differentiation. In mouse, this protein has been shown to relay the sonic hedgehog (SHH) signal from the polarizing region to the apical ectodermal ridge during limb bud outgrowth.

Molecular Weight: 21 kDa

Gene ID: 23892

UniProt: [O70326](#)

Pathways: [Regulation of Muscle Cell Differentiation](#), [Tube Formation](#), [Maintenance of Protein Location](#)

Application Details

Application Notes: For WB starting dilution is: 1:1000

For IHC-P starting dilution is: 1:50~100

Restrictions: For Research Use only

Handling

Format: Liquid

Concentration: 2 mg/mL

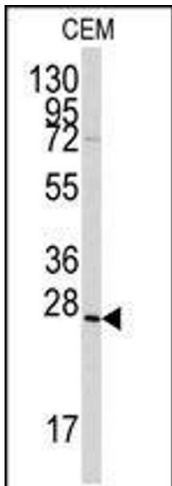
Buffer: Supplied in PBS with 0.09 % (W/V) sodium azide.

Preservative: Sodium azide

Precaution of Use: This product contains Sodium azide: a POISONOUS AND HAZARDOUS SUBSTANCE which should be handled by trained staff only.

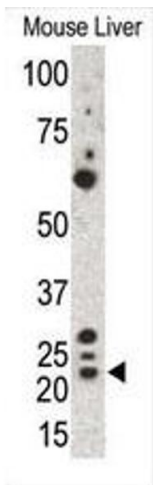
Storage: 4 °C,-20 °C

Storage Comment: Store at 4°C for three months and -20°C, stable for up to one year. As with all antibodies care should be taken to avoid repeated freeze thaw cycles. Antibodies should not be exposed to prolonged high temperatures.



Western Blotting

Image 1. Western blot analysis of anti-Gremlin Pab in CEM cell line lysates (35ug/lane)



Western Blotting

Image 2. Western blot analysis of anti-Gremlin Pab in mouse liver cell lysate. Gremlin was detected by using AP6133a.

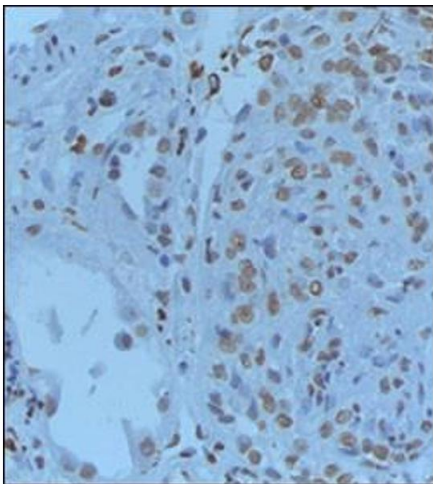


Image 3. Formalin-PBS and Bouin embedded paraffin human renal tissue pretreated with heat induced epitope retrieval Citrate buffer pH 6.0 in microwave. Dilution of primary antibody was 1:50. Detection method was ABC system or Vectastaint Elite VECTOR. Data and protocol courtesy of Dr. Maria E. Burgos of Universidad Austral de Chile.