

Datasheet for ABIN5531275
anti-GRM7 antibody (C-Term)[Go to Product page](#)

2 Images

Overview

Quantity:	400 µL
Target:	GRM7
Binding Specificity:	AA 857-887, C-Term
Reactivity:	Human
Host:	Rabbit
Clonality:	Polyclonal
Conjugate:	This GRM7 antibody is un-conjugated
Application:	Western Blotting (WB), Immunohistochemistry (Paraffin-embedded Sections) (IHC (p))

Product Details

Immunogen:	This Metabotropic Glutamate Receptor 7 (GPRC1G) antibody is generated from rabbits immunized with a KLH conjugated synthetic peptide between 857-887 amino acids from the C-terminal region of human Metabotropic Glutamate Receptor 7 (GPRC1G).
Isotype:	Ig Fraction
Purification:	This antibody is prepared by Saturated Ammonium Sulfate (SAS) precipitation followed by dialysis

Target Details

Target:	GRM7
Alternative Name:	Metabotropic Glutamate Receptor 7 (GRM7 Products)
Background:	L-glutamate is the major excitatory neurotransmitter in the central nervous system and

Target Details

activates both ionotropic and metabotropic glutamate receptors. Glutamatergic neurotransmission is involved in most aspects of normal brain function and can be perturbed in many neuropathologic conditions. The metabotropic glutamate receptors are a family of G protein-coupled receptors, that have been divided into 3 groups on the basis of sequence homology, putative signal transduction mechanisms, and pharmacologic properties. Group I includes GRM1 and GRM5 and these receptors have been shown to activate phospholipase C. Group II includes GRM2 and GRM3 while Group III includes GRM4, GRM6, GRM7 and GRM8. Group II and III receptors are linked to the inhibition of the cyclic AMP cascade but differ in their agonist selectivities. Alternative splice variants of GRM8 have been described but their full-length nature has not been determined.

Molecular Weight:	102 kDa
Gene ID:	2917
UniProt:	Q14831
Pathways:	Sensory Perception of Sound , cAMP Metabolic Process , Feeding Behaviour

Application Details

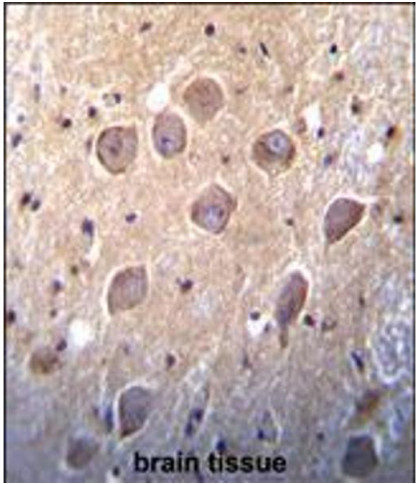
Application Notes:	For WB starting dilution is: 1:1000 For IHC-P starting dilution is: 1:10~50
Restrictions:	For Research Use only

Handling

Format:	Liquid
Concentration:	2 mg/mL
Buffer:	Supplied in PBS with 0.09 % (W/V) sodium azide.
Preservative:	Sodium azide
Precaution of Use:	This product contains Sodium azide: a POISONOUS AND HAZARDOUS SUBSTANCE which should be handled by trained staff only.
Storage:	4 °C,-20 °C
Storage Comment:	Store at 4°C for three months and -20°C, stable for up to one year. As with all antibodies care should be taken to avoid repeated freeze thaw cycles. Antibodies should not be exposed to

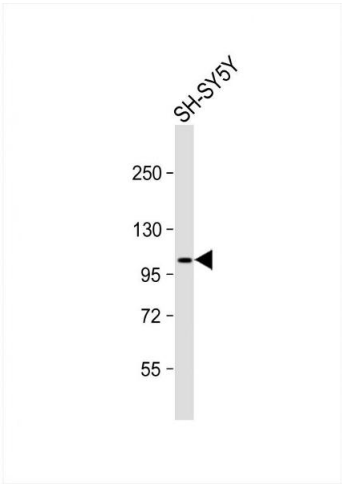
prolonged high temperatures.

Images



Immunohistochemistry

Image 1. Metabotropic Glutamate Receptor 7 (GPRC1G) Antibody immunohistochemistry analysis in formalin fixed and paraffin embedded human brain tissue followed by peroxidase conjugation of the secondary antibody and DAB staining. This data demonstrates the use of Metabotropic Glutamate Receptor 7 (GPRC1G) Antibody for immunohistochemistry.



Western Blotting

Image 2. Western Blot at 1:1000 dilution + SH-SY5Y whole cell lysate Lysates/proteins at 20 ug per lane.