

Datasheet for ABIN5531276
anti-GRM8 antibody (C-Term)



[Go to Product page](#)

1 Image

Overview

Quantity:	400 µL
Target:	GRM8
Binding Specificity:	AA 852-882, C-Term
Reactivity:	Human, Mouse
Host:	Rabbit
Clonality:	Polyclonal
Conjugate:	This GRM8 antibody is un-conjugated
Application:	Western Blotting (WB)

Product Details

Immunogen:	This Metabotropic Glutamate Receptor 8 antibody is generated from rabbits immunized with a KLH conjugated synthetic peptide between 852-882 amino acids from the C-terminal region of human Metabotropic Glutamate Receptor 8.
Isotype:	Ig Fraction
Purification:	This antibody is prepared by Saturated Ammonium Sulfate (SAS) precipitation followed by dialysis

Target Details

Target:	GRM8
Alternative Name:	Metabotropic Glutamate Receptor 8 (GRM8 Products)
Background:	L-glutamate is the major excitatory neurotransmitter in the central nervous system and

Target Details

activates both ionotropic and metabotropic glutamate receptors. Glutamatergic neurotransmission is involved in most aspects of normal brain function and can be perturbed in many neuropathologic conditions. The metabotropic glutamate receptors are a family of G protein-coupled receptors, that have been divided into 3 groups on the basis of sequence homology, putative signal transduction mechanisms, and pharmacologic properties. Group I includes GRM1 and GRM5 and these receptors have been shown to activate phospholipase C. Group II includes GRM2 and GRM3 while Group III includes GRM4, GRM6, GRM7 and GRM8. Group II and III receptors are linked to the inhibition of the cyclic AMP cascade but differ in their agonist selectivities.

Molecular Weight: 102 kDa

Gene ID: 2918

UniProt: [O00222](#)

Pathways: [cAMP Metabolic Process](#), [Synaptic Membrane](#)

Application Details

Application Notes: For WB starting dilution is: 1:1000

Restrictions: For Research Use only

Handling

Format: Liquid

Concentration: 2 mg/mL

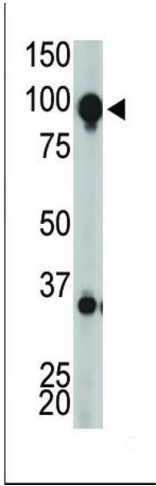
Buffer: Supplied in PBS with 0.09 % (W/V) sodium azide.

Preservative: Sodium azide

Precaution of Use: This product contains Sodium azide: a POISONOUS AND HAZARDOUS SUBSTANCE which should be handled by trained staff only.

Storage: 4 °C, -20 °C

Storage Comment: Store at 4°C for three months and -20°C, stable for up to one year. As with all antibodies care should be taken to avoid repeated freeze thaw cycles. Antibodies should not be exposed to prolonged high temperatures.



Western Blotting

Image 1. Antibody is used in Western blot to detect GRPRC1H in mouse brain tissue lysate.