

Datasheet for ABIN5531334
anti-SLC2A4RG antibody (AA 213-242)[Go to Product page](#)

2 Images

Overview

| | |
|----------------------|--|
| Quantity: | 400 µL |
| Target: | SLC2A4RG |
| Binding Specificity: | AA 213-242 |
| Reactivity: | Human |
| Host: | Rabbit |
| Clonality: | Polyclonal |
| Conjugate: | This SLC2A4RG antibody is un-conjugated |
| Application: | Western Blotting (WB), Immunohistochemistry (Paraffin-embedded Sections) (IHC (p)) |

Product Details

| | |
|---------------|---|
| Immunogen: | This HDBP1 antibody is generated from rabbits immunized with a KLH conjugated synthetic peptide between 213-242 amino acids from the Central region of human HDBP1. |
| Isotype: | Ig Fraction |
| Purification: | This antibody is purified through a protein G column, followed by dialysis against PBS. |

Target Details

| | |
|-------------------|--|
| Target: | SLC2A4RG |
| Alternative Name: | HDBP1 (SLC2A4RG Products) |
| Background: | THDBP1 is a nuclear transcription factor involved in the activation of the solute carrier family 2 member 4 gene. This protein interacts with another transcription factor, myocyte enhancer factor 2, to activate transcription of this gene. |

Target Details

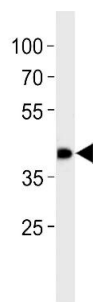
| | |
|-------------------|--------------------------------|
| Molecular Weight: | 41 kDa |
| Gene ID: | 56731 |
| UniProt: | Q9NR83 |
| Pathways: | AMPK Signaling |

Application Details

| | |
|--------------------|--|
| Application Notes: | For WB starting dilution is: 1:1000 For IHC-P starting dilution is: 1:10~50 |
| Restrictions: | For Research Use only |

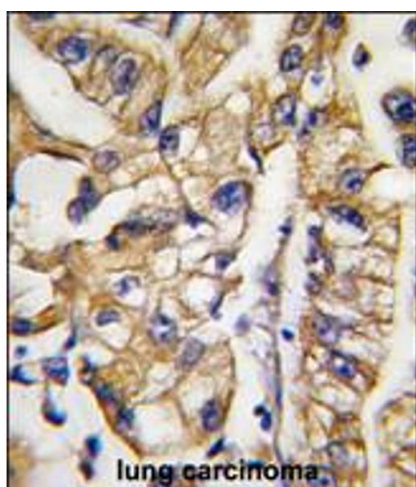
Handling

| | |
|--------------------|--|
| Format: | Liquid |
| Concentration: | 1.65 mg/mL |
| Buffer: | Supplied in PBS with 0.09 % (W/V) sodium azide. |
| Preservative: | Sodium azide |
| Precaution of Use: | This product contains Sodium azide: a POISONOUS AND HAZARDOUS SUBSTANCE which should be handled by trained staff only. |
| Storage: | 4 °C, -20 °C |
| Storage Comment: | Store at 4°C for three months and -20°C, stable for up to one year. As with all antibodies care should be taken to avoid repeated freeze thaw cycles. Antibodies should not be exposed to prolonged high temperatures. |



Western Blotting

Image 1. Western blot analysis in SW620 cell line lysates (35ug/lane).



Immunohistochemistry

Image 2. Formalin-fixed and paraffin-embedded human lung carcinoma tissue reacted with HDBP1 Antibody, which was peroxidase-conjugated to the secondary antibody, followed by DAB staining.