

Datasheet for ABIN5531387  
**anti-HRH1 antibody (AA 273-301)**



[Go to Product page](#)

2 Images

## Overview

Quantity:	400 µL
Target:	HRH1
Binding Specificity:	AA 273-301
Reactivity:	Human
Host:	Rabbit
Clonality:	Polyclonal
Conjugate:	This HRH1 antibody is un-conjugated
Application:	Western Blotting (WB), Immunohistochemistry (Paraffin-embedded Sections) (IHC (p))

## Product Details

Immunogen:	This HRH1 antibody is generated from rabbits immunized with a KLH conjugated synthetic peptide between 273-301 amino acids from the Central region of human HRH1.
Isotype:	Ig Fraction
Purification:	This antibody is purified through a protein A column, followed by peptide affinity purification.

## Target Details

Target:	HRH1
Alternative Name:	HRH1 ( <a href="#">HRH1 Products</a> )
Background:	Histamine is a ubiquitous messenger molecule released from mast cells, enterochromaffin-like cells, and neurons. Its various actions are mediated by histamine receptors H1, H2, H3 and H4.  This gene was thought to be intronless until recently. The protein encoded by this gene is an

## Target Details

integral membrane protein and belongs to the G protein-coupled receptor superfamily. It mediates the contraction of smooth muscles, the increase in capillary permeability due to contraction of terminal venules, the release of catecholamine from adrenal medulla, and neurotransmission in the central nervous system. Multiple alternatively spliced variants, encoding the same protein, have been identified. [provided by RefSeq].

Molecular Weight: 56 kDa

Gene ID: 3269

UniProt: [P35367](#)

Pathways: [Regulation of Carbohydrate Metabolic Process](#)

## Application Details

Application Notes: For WB starting dilution is: 1:1000

For IHC-P starting dilution is: 1:10~50

Restrictions: For Research Use only

## Handling

Format: Liquid

Concentration: 0.5 mg/mL

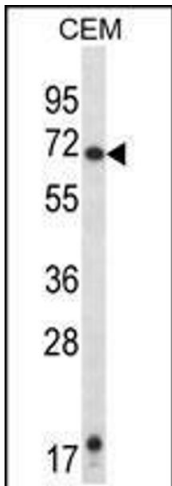
Buffer: Supplied in PBS with 0.09 % (W/V) sodium azide.

Preservative: Sodium azide

Precaution of Use: This product contains Sodium azide: a POISONOUS AND HAZARDOUS SUBSTANCE which should be handled by trained staff only.

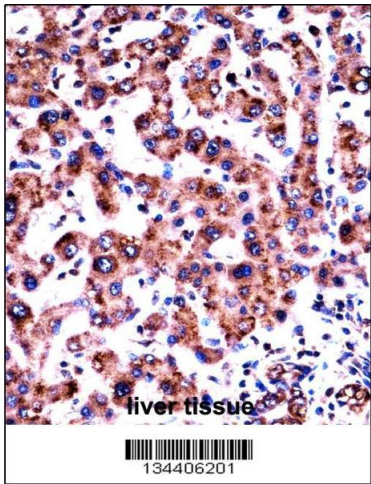
Storage: 4 °C,-20 °C

Storage Comment: Store at 4°C for three months and -20°C, stable for up to one year. As with all antibodies care should be taken to avoid repeated freeze thaw cycles. Antibodies should not be exposed to prolonged high temperatures.



#### Western Blotting

**Image 1.** Western blot analysis in CEM cell line lysates (35ug/lane).



#### Immunohistochemistry

**Image 2.** HRH1 Antibody immunohistochemistry analysis in formalin fixed and paraffin embedded human liver tissue followed by peroxidase conjugation of the secondary antibody and DAB staining.