

Datasheet for ABIN5531416
anti-LMX1A antibody (AA 130-159)



[Go to Product page](#)

1 Image

Overview

Quantity:	400 µL
Target:	LMX1A
Binding Specificity:	AA 130-159
Reactivity:	Human, Mouse
Host:	Rabbit
Clonality:	Polyclonal
Conjugate:	This LMX1A antibody is un-conjugated
Application:	Western Blotting (WB)

Product Details

Immunogen:	This Lmx1a antibody is generated from rabbits immunized with a KLH conjugated synthetic peptide between 130-159 amino acids from the Central region of human Lmx1a.
Isotype:	Ig Fraction
Purification:	This antibody is purified through a protein G column, followed by dialysis against PBS.

Target Details

Target:	LMX1A
Alternative Name:	Lmx1a (LMX1A Products)
Background:	Insulin is produced exclusively by the beta cells in the islets of Langerhans in the pancreas. The level and beta-cell specificity of insulin gene expression are regulated by a set of nuclear genes that bind to specific sequences within the promoter of the insulin gene (INS, MIM 176730) and

Target Details

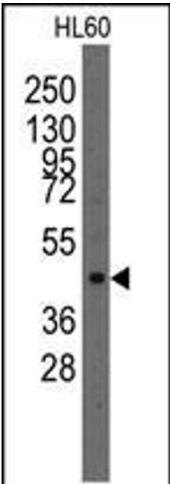
	interact with RNA polymerase to activate or repress transcription. LMX1 is a homeodomain protein that binds an A/T-rich sequence in the insulin promoter and stimulates transcription of insulin.
Molecular Weight:	43 kDa
Gene ID:	110648
UniProt:	Q9JKU8
Pathways:	Dopaminergic Neurogenesis

Application Details

Application Notes:	For WB starting dilution is: 1:1000
Restrictions:	For Research Use only

Handling

Format:	Liquid
Concentration:	2 mg/mL
Buffer:	Supplied in PBS with 0.09 % (W/V) sodium azide.
Preservative:	Sodium azide
Precaution of Use:	This product contains Sodium azide: a POISONOUS AND HAZARDOUS SUBSTANCE which should be handled by trained staff only.
Storage:	4 °C,-20 °C
Storage Comment:	Store at 4°C for three months and -20°C, stable for up to one year. As with all antibodies care should be taken to avoid repeated freeze thaw cycles. Antibodies should not be exposed to prolonged high temperatures.



Western Blotting

Image 1. Western blot analysis of anti-Lmx1a Pab in HL60 cell line lysates (35ug/lane).