

Datasheet for ABIN5531470  
**anti-IL17D antibody (C-Term)**



[Go to Product page](#)

1 Image

## Overview

|                      |                                      |
|----------------------|--------------------------------------|
| Quantity:            | 400 µL                               |
| Target:              | IL17D                                |
| Binding Specificity: | AA 155-183, C-Term                   |
| Reactivity:          | Human                                |
| Host:                | Rabbit                               |
| Clonality:           | Polyclonal                           |
| Conjugate:           | This IL17D antibody is un-conjugated |
| Application:         | Western Blotting (WB)                |

## Product Details

|               |  |
|---------------|--|
| Immunogen:    | This IL17D antibody is generated from rabbits immunized with a KLH conjugated synthetic peptide between 155-183 amino acids from the C-terminal region of human IL17D. |
| Isotype:      | Ig Fraction  |
| Purification: | This antibody is purified through a protein A column, followed by peptide affinity purification.   |

## Target Details

|                   |   |
|-------------------|---|
| Target:           | IL17D   |
| Alternative Name: | IL17D ( <a href="#">IL17D Products</a> )  |
| Background:       | The protein encoded by this gene is a cytokine that shares the sequence similarity with IL17. The treatment of endothelial cells with this cytokine has been shown to stimulate the production of other cytokines including IL6, IL8 and CSF2/ GM-CSF. The increased expression |

## Target Details

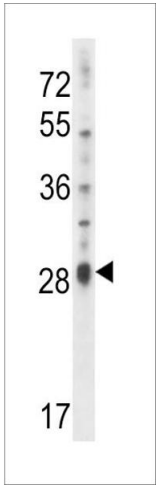
|                   |   |
|-------------------|---|
|                   | of IL8 induced by this cytokine was found to be NF-kappa B-dependent. |
| Molecular Weight: | 22 kDa  |
| Gene ID:          | 53342   |
| UniProt:          | <a href="#">Q8TAD2</a>  |
| Pathways:         | <a href="#">Cellular Response to Molecule of Bacterial Origin</a>     |

## Application Details

|                    |                                     |
|--------------------|-------------------------------------|
| Application Notes: | For WB starting dilution is: 1:1000 |
| Restrictions:      | For Research Use only               |

## Handling

|                    |  |
|--------------------|--|
| Format:            | Liquid   |
| Concentration:     | 0.5 mg/mL  |
| Buffer:            | Supplied in PBS with 0.09 % (W/V) sodium azide.  |
| Preservative:      | Sodium azide   |
| Precaution of Use: | This product contains Sodium azide: a POISONOUS AND HAZARDOUS SUBSTANCE which should be handled by trained staff only.   |
| Storage:           | 4 °C,-20 °C  |
| Storage Comment:   | Store at 4°C for three months and -20°C, stable for up to one year. As with all antibodies care should be taken to avoid repeated freeze thaw cycles. Antibodies should not be exposed to prolonged high temperatures. |



Western Blotting

**Image 1.** Western blot analysis in NCI-H460 cell line lysates (35ug/lane).