

Datasheet for ABIN5531471  
**anti-IL-25 antibody (AA 76-104)**[Go to Product page](#)

## 3 Images

## Overview

Quantity:	400 µL
Target:	IL-25 (IL25)
Binding Specificity:	AA 76-104
Reactivity:	Human
Host:	Rabbit
Clonality:	Polyclonal
Conjugate:	This IL-25 antibody is un-conjugated
Application:	Western Blotting (WB), Immunohistochemistry (Paraffin-embedded Sections) (IHC (p))

## Product Details

Immunogen:	This IL25 antibody is generated from rabbits immunized with a KLH conjugated synthetic peptide between 76-104 amino acids from the Central region of human IL25.
Isotype:	Ig Fraction
Purification:	This antibody is purified through a protein A column, followed by peptide affinity purification.

## Target Details

Target:	IL-25 (IL25)
Alternative Name:	IL25 ( <a href="#">IL25 Products</a> )
Background:	The protein encoded by this gene is a cytokine that shares sequence similarity with interleukin 17. This cytokine can induce NF-kappaB activation, and stimulate the production of interleukin 8. Both this cytokine and interleukin 17B are ligands for the cytokine receptor IL17BR. Studies of

## Target Details

a similar gene in mice suggest that this cytokine may be a pro-inflammatory cytokine favoring the Th2-type immune response. Alternative splicing results in multiple transcript variants.

Molecular Weight: 20 kDa

Gene ID: 64806

UniProt: [Q9H293](#)

## Application Details

Application Notes: For WB starting dilution is: 1:1000

For IHC-P starting dilution is: 1:10~50

Restrictions: For Research Use only

## Handling

Format: Liquid

Concentration: 0.42 mg/mL

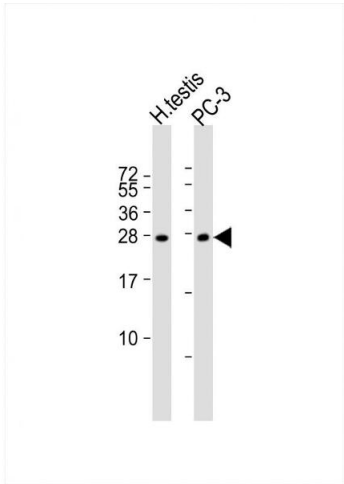
Buffer: Supplied in PBS with 0.09 % (W/V) sodium azide.

Preservative: Sodium azide

Precaution of Use: This product contains Sodium azide: a POISONOUS AND HAZARDOUS SUBSTANCE which should be handled by trained staff only.

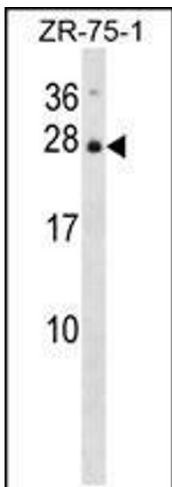
Storage: 4 °C, -20 °C

Storage Comment: Store at 4°C for three months and -20°C, stable for up to one year. As with all antibodies care should be taken to avoid repeated freeze thaw cycles. Antibodies should not be exposed to prolonged high temperatures.



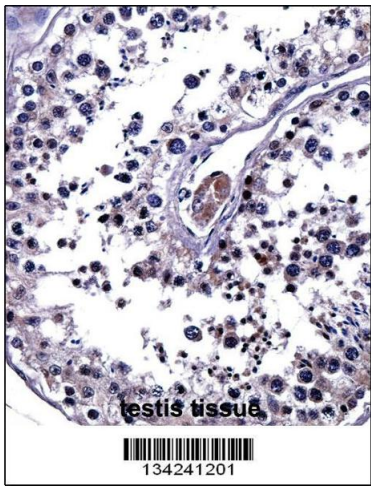
Western Blotting

**Image 1.** Western Blot at 1:1000 dilution Lane 1: human testis lysate Lane 2: PC-3 whole cell lysate Lysates/proteins at 20 ug per lane.



Western Blotting

**Image 2.** Western blot analysis in ZR-75-1 cell line lysates (35ug/lane).



Immunohistochemistry

**Image 3.** IL25 Antibody immunohistochemistry analysis in formalin fixed and paraffin embedded human testis tissue followed by peroxidase conjugation of the secondary antibody and DAB staining.