

Datasheet for ABIN5531496
anti-KIF18A antibody (C-Term)



[Go to Product page](#)

1 Image

Overview

Quantity:	400 µL
Target:	KIF18A
Binding Specificity:	AA 644-673, C-Term
Reactivity:	Human
Host:	Rabbit
Clonality:	Polyclonal
Conjugate:	This KIF18A antibody is un-conjugated
Application:	Western Blotting (WB)

Product Details

Immunogen:	This KIF18A antibody is generated from rabbits immunized with a KLH conjugated synthetic peptide between 644-673 amino acids from the C-terminal region of human KIF18A.
Isotype:	Ig Fraction
Purification:	This antibody is purified through a protein A column, followed by peptide affinity purification.

Target Details

Target:	KIF18A
Alternative Name:	KIF18A (KIF18A Products)
Background:	KIF18A is a member of the kinesin superfamily of microtubule-associated molecular motors (see MIM 148760) that use hydrolysis of ATP to produce force and movement along microtubules (Luboshits and Benayahu, 2005 [PubMed 15878648]).[supplied by OMIM].

Target Details

Molecular Weight:	102 kDa
Gene ID:	81930
UniProt:	Q8NI77

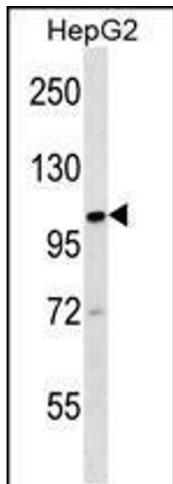
Application Details

Application Notes:	For WB starting dilution is: 1:1000
Restrictions:	For Research Use only

Handling

Format:	Liquid
Concentration:	0.5 mg/mL
Buffer:	Supplied in PBS with 0.09 % (W/V) sodium azide.
Preservative:	Sodium azide
Precaution of Use:	This product contains Sodium azide: a POISONOUS AND HAZARDOUS SUBSTANCE which should be handled by trained staff only.
Storage:	4 °C, -20 °C
Storage Comment:	Store at 4°C for three months and -20°C, stable for up to one year. As with all antibodies care should be taken to avoid repeated freeze thaw cycles. Antibodies should not be exposed to prolonged high temperatures.

Images



Western Blotting

Image 1. Western blot analysis in HepG2 cell line lysates (35ug/lane).