



[Go to Product page](#)

Datasheet for ABIN5531500  
**anti-Kallikrein 10 antibody (N-Term)**

2 Images

Overview

Quantity:	400 µL
Target:	Kallikrein 10 (KLK10)
Binding Specificity:	AA 22-51, N-Term
Reactivity:	Human
Host:	Rabbit
Clonality:	Polyclonal
Conjugate:	This Kallikrein 10 antibody is un-conjugated
Application:	Western Blotting (WB)

Product Details

Immunogen:	This KLK10 antibody is generated from rabbits immunized with a KLH conjugated synthetic peptide between 22-51 amino acids from the N-terminal region of human KLK10.
Isotype:	Ig Fraction
Purification:	This antibody is purified through a protein A column, followed by peptide affinity purification.

Target Details

Target:	Kallikrein 10 (KLK10)
Alternative Name:	KLK10 ( <a href="#">KLK10 Products</a> )
Background:	Kallikreins are a subgroup of serine proteases having diverse physiological functions. Growing evidence suggests that many kallikreins are implicated in carcinogenesis and some have potential as novel cancer and other disease biomarkers. This gene is one of the fifteen kallikrein

## Target Details

---

subfamily members located in a cluster on chromosome 19. Its encoded protein is secreted and may play a role in suppression of tumorigenesis in breast and prostate cancers. Alternate splicing of this gene results in multiple transcript variants encoding the same protein. [provided by RefSeq].

Molecular Weight: 30 kDa

Gene ID: 5655

UniProt: [O43240](#)

Pathways: [Complement System](#)

## Application Details

---

Application Notes: For WB starting dilution is: 1:1000

Restrictions: For Research Use only

## Handling

---

Format: Liquid

Concentration: 0.5 mg/mL

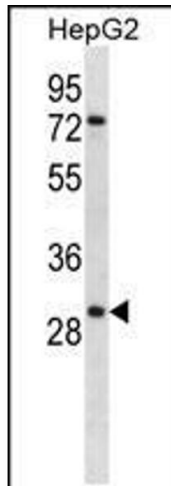
Buffer: Supplied in PBS with 0.09 % (W/V) sodium azide.

Preservative: Sodium azide

Precaution of Use: This product contains Sodium azide: a POISONOUS AND HAZARDOUS SUBSTANCE which should be handled by trained staff only.

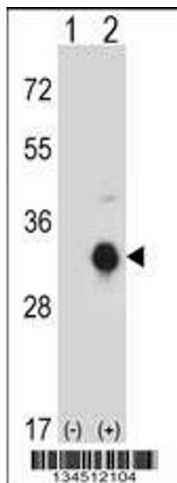
Storage: 4 °C,-20 °C

Storage Comment: Store at 4°C for three months and -20°C, stable for up to one year. As with all antibodies care should be taken to avoid repeated freeze thaw cycles. Antibodies should not be exposed to prolonged high temperatures.



#### Western Blotting

**Image 1.** Western blot analysis in HepG2 cell line lysates (35ug/lane).



#### Western Blotting

**Image 2.** Western blot analysis of KLK10 using rabbit polyclonal KLK10 Antibody using 293 cell lysates (2 ug/lane) either nontransfected (Lane 1) or transiently transfected (Lane 2) with the KLK10 gene.