

Datasheet for ABIN5531520

anti-LIM Domain Binding 2 Protein antibody (C-Term)[Go to Product page](#)**2** Images

Overview

Quantity:	400 µL
Target:	LIM Domain Binding 2 Protein (LDB2)
Binding Specificity:	AA 314-342, C-Term
Reactivity:	Human
Host:	Rabbit
Clonality:	Polyclonal
Conjugate:	This LIM Domain Binding 2 Protein antibody is un-conjugated
Application:	Western Blotting (WB), Immunohistochemistry (Paraffin-embedded Sections) (IHC (p))

Product Details

Immunogen:	This LDB2 antibody is generated from rabbits immunized with a KLH conjugated synthetic peptide between 314-342 amino acids from the C-terminal region of human LDB2.
Isotype:	Ig Fraction
Purification:	This antibody is purified through a protein A column, followed by peptide affinity purification.

Target Details

Target:	LIM Domain Binding 2 Protein (LDB2)
Alternative Name:	LDB2 (LDB2 Products)
Background:	Genes encoding LIM domain-binding factors were initially isolated in a screen for proteins that physically interact with the LIM domains of nuclear proteins (summarized by Semina et al., 1998 [PubMed 9799849]). These proteins, such as the one encoded by the LDB2 gene, are

Target Details

capable of binding to a variety of transcription factors and are likely to function at enhancers to bring together diverse transcription factors and form higher order activation complexes or to block formation of such complexes (Jurata and Gill, 1997 [PubMed 9315627]). The family of genes encoding LIM domain-binding factors includes 2 members isolated from the mouse, Clim1 (Bach et al., 1997 [PubMed 9192866]) and Clim2/Lbd1/Nli (Agulnick et al., 1996 [PubMed 8918878], Jurata et al., 1996 [PubMed 8876198], Bach et al., 1997 [PubMed 9192866]) and their homologs cloned from the frog, chicken, and fly. The fact that LIM domain-binding factors are likely to be involved in the coordination of the transcriptional activity of many diverse factors might implicate them in human phenotypes characterized by multiple affected sites.

Molecular Weight: 43 kDa

Gene ID: 9079

UniProt: [O43679](#)

Pathways: [Stem Cell Maintenance](#)

Application Details

Application Notes: For WB starting dilution is: 1:1000

For IHC-P starting dilution is: 1:10~50

Restrictions: For Research Use only

Handling

Format: Liquid

Concentration: 0.4 mg/mL

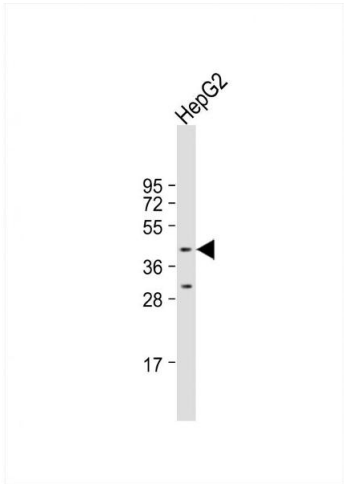
Buffer: Supplied in PBS with 0.09 % (W/V) sodium azide.

Preservative: Sodium azide

Precaution of Use: This product contains Sodium azide: a POISONOUS AND HAZARDOUS SUBSTANCE which should be handled by trained staff only.

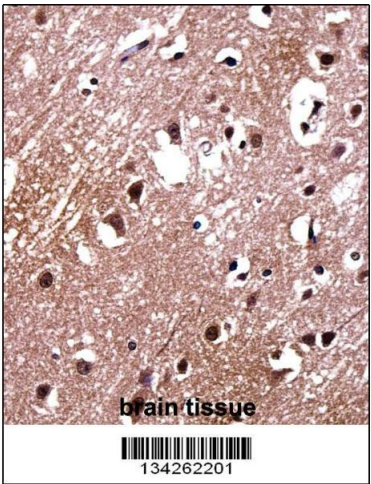
Storage: 4 °C, -20 °C

Storage Comment: Store at 4°C for three months and -20°C, stable for up to one year. As with all antibodies care should be taken to avoid repeated freeze thaw cycles. Antibodies should not be exposed to prolonged high temperatures.



Western Blotting

Image 1. Western Blot at 1:1000 dilution + HepG2 whole cell lysate Lysates/proteins at 20 ug per lane.



Immunohistochemistry

Image 2. LDB2 Antibody immunohistochemistry analysis in formalin fixed and paraffin embedded human brain tissue followed by peroxidase conjugation of the secondary antibody and DAB staining.