

Datasheet for ABIN5531546
anti-Latexin antibody (N-Term)

3 Images

[Go to Product page](#)

Overview

Quantity:	400 µL
Target:	Latexin (LXN)
Binding Specificity:	AA 23-53, N-Term
Reactivity:	Human
Host:	Rabbit
Clonality:	Polyclonal
Conjugate:	This Latexin antibody is un-conjugated
Application:	Western Blotting (WB), Immunohistochemistry (Paraffin-embedded Sections) (IHC (p))

Product Details

Immunogen:	This Latexin antibody is generated from rabbits immunized with a KLH conjugated synthetic peptide between 23-53 amino acids from the N-terminal region of human Latexin.
Isotype:	Ig Fraction
Purification:	This antibody is purified through a protein A column, followed by peptide affinity purification.

Target Details

Target:	Latexin (LXN)
Alternative Name:	Latexin (LXN Products)
Background:	Latexin possesses nearly irreversible, non-competitive and potent inhibition of zinc-dependent metallopeptidases CPA1, CPA2, and CPA4. It is expressed in a neuronal subset in the cerebral cortex and cells in other neural and non-neural tissues of rat. Latexin plays a role in

Target Details

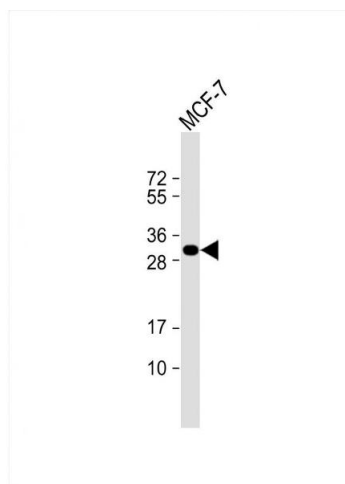
	regional specification and/or morphogenesis of the forebrain.
Molecular Weight:	26 kDa
Gene ID:	56925
UniProt:	Q9BS40

Application Details

Application Notes:	For WB starting dilution is: 1:1000
	For IHC-P starting dilution is: 1:10~50
Restrictions:	For Research Use only

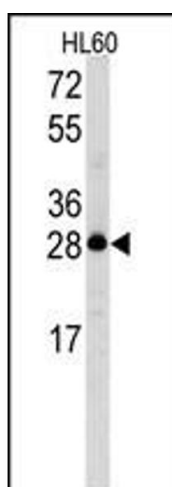
Handling

Format:	Liquid
Concentration:	0.5 mg/mL
Buffer:	Supplied in PBS with 0.09 % (W/V) sodium azide.
Preservative:	Sodium azide
Precaution of Use:	This product contains Sodium azide: a POISONOUS AND HAZARDOUS SUBSTANCE which should be handled by trained staff only.
Storage:	4 °C, -20 °C
Storage Comment:	Store at 4°C for three months and -20°C, stable for up to one year. As with all antibodies care should be taken to avoid repeated freeze thaw cycles. Antibodies should not be exposed to prolonged high temperatures.



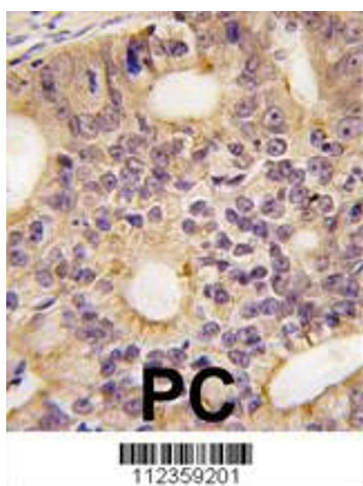
Western Blotting

Image 1. Western Blot at 1:1000 dilution + MCF-7 whole cell lysate Lysates/proteins at 20 ug per lane.



Western Blotting

Image 2. Western blot analysis of Latexin Antibody in HL60 cell line lysates (35ug/lane)



Immunohistochemistry

Image 3. Formalin-fixed and paraffin-embedded human prostata carcinoma tissue reacted with Latexin antibody (N-term), which was peroxidase-conjugated to the secondary antibody, followed by DAB staining.