

Datasheet for ABIN5531557  
**anti-LYZ antibody (C-Term)**



[Go to Product page](#)

3 Images

## Overview

Quantity:	400 µL
Target:	LYZ
Binding Specificity:	AA 119-154, C-Term
Reactivity:	Human
Host:	Rabbit
Clonality:	Polyclonal
Conjugate:	This LYZ antibody is un-conjugated
Application:	Western Blotting (WB), Immunohistochemistry (Paraffin-embedded Sections) (IHC (p))

## Product Details

Immunogen:	This LYZ antibody is generated from a rabbit immunized with a KLH conjugated synthetic peptide between 119-154 amino acids from the C-terminal region of human LYZ.
Isotype:	Ig Fraction
Purification:	This antibody is purified through a protein A column, followed by peptide affinity purification.

## Target Details

Target:	LYZ
Alternative Name:	LYZ ( <a href="#">LYZ Products</a> )
Background:	Lysozymes have primarily a bacteriolytic function, those in tissues and body fluids are associated with the monocyte- macrophage system and enhance the activity of immunoagents.

## Target Details

---

Molecular Weight: 17 kDa

Gene ID: 4069

UniProt: [P61626](#)

## Application Details

---

Application Notes: For WB starting dilution is: 1:2000

For IHC-P starting dilution is: 1:25

Restrictions: For Research Use only

## Handling

---

Format: Liquid

Concentration: 0.5 mg/mL

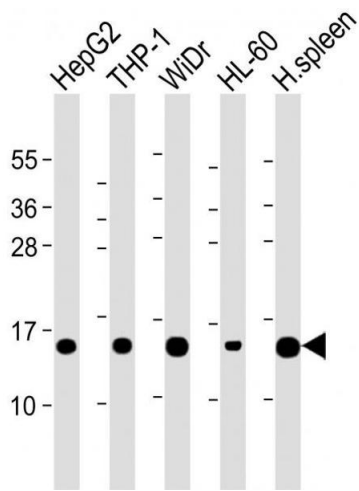
Buffer: Supplied in PBS with 0.09 % (W/V) sodium azide.

Preservative: Sodium azide

Precaution of Use: This product contains Sodium azide: a POISONOUS AND HAZARDOUS SUBSTANCE which should be handled by trained staff only.

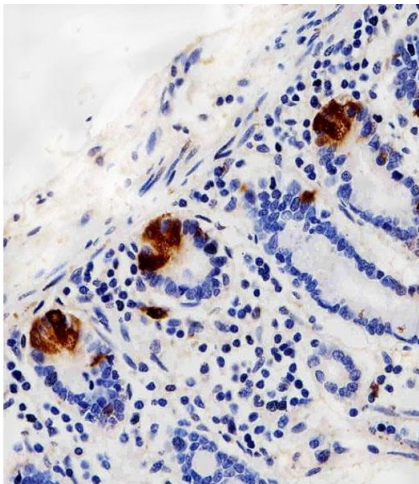
Storage: 4 °C, -20 °C

Storage Comment: Store at 4°C for three months and -20°C, stable for up to one year. As with all antibodies care should be taken to avoid repeated freeze thaw cycles. Antibodies should not be exposed to prolonged high temperatures.



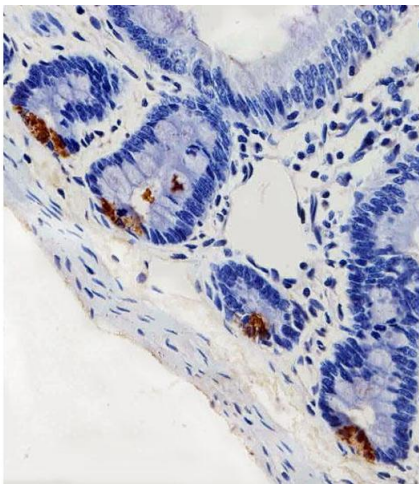
### Western Blotting

**Image 1.** Western Blot at 1:2000 dilution Lane 1: HepG2 whole cell lysate Lane 2: THP-1 whole cell lysate Lane 3: WiDr whole cell lysate Lane 4: HL-60 whole cell lysate Lane 5: Human spleen lysate Lysates/proteins at 20 ug per lane.



### Immunohistochemistry

**Image 2.** Immunohistochemical analysis of paraffin-embedded H. small intestine section using LYZ Antibody . Antibody was diluted at 1:100 dilution. A peroxidase-conjugated goat anti-rabbit IgG at 1:400 dilution was used as the secondary antibody, followed by DAB staining.



### Immunohistochemistry

**Image 3.** Immunohistochemical analysis of paraffin-embedded R. small intestine section using LYZ Antibody . Antibody was diluted at 1:100 dilution. A peroxidase-conjugated goat anti-rabbit IgG at 1:400 dilution was used as the secondary antibody, followed by DAB staining.