

Datasheet for ABIN5531571
anti-MBD2 antibody (N-Term)



[Go to Product page](#)

2 Images

Overview

Quantity:	400 µL
Target:	MBD2
Binding Specificity:	AA 120-151, N-Term
Reactivity:	Human, Mouse
Host:	Rabbit
Clonality:	Polyclonal
Conjugate:	This MBD2 antibody is un-conjugated
Application:	Western Blotting (WB)

Product Details

Immunogen:	This MBD2 antibody is generated from rabbits immunized with a KLH conjugated synthetic peptide between 120-151 amino acids from the N-terminal region of human MBD2.
Isotype:	Ig Fraction
Purification:	This antibody is purified through a protein A column, followed by peptide affinity purification.

Target Details

Target:	MBD2
Alternative Name:	MBD2 (MBD2 Products)
Background:	DNA methylation is the major modification of eukaryotic genomes and plays an essential role in mammalian development. Human proteins MECP2, MBD1, MBD2, MBD3, and MBD4 comprise a family of nuclear proteins related by the presence in each of a methyl-CpG binding domain

Target Details

(MBD). Each of these proteins, with the exception of MBD3, is capable of binding specifically to methylated DNA. MECP2, MBD1 and MBD2 can also repress transcription from methylated gene promoters. The protein encoded by this gene may function as a mediator of the biological consequences of the methylation signal. It is also reported that the this protein functions as a demethylase to activate transcription, as DNA methylation causes gene silencing.

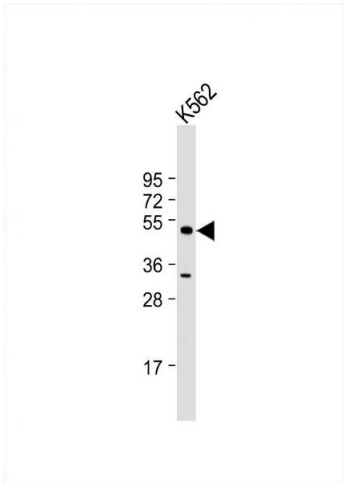
Molecular Weight:	43 kDa
Gene ID:	8932
UniProt:	Q9UBB5
Pathways:	Chromatin Binding

Application Details

Application Notes:	For WB starting dilution is: 1:1000
Restrictions:	For Research Use only

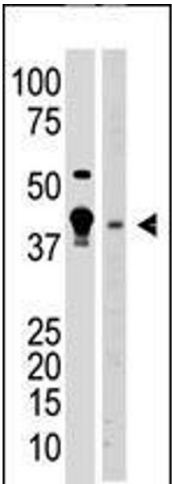
Handling

Format:	Liquid
Concentration:	0.5 mg/mL
Buffer:	Supplied in PBS with 0.09 % (W/V) sodium azide.
Preservative:	Sodium azide
Precaution of Use:	This product contains Sodium azide: a POISONOUS AND HAZARDOUS SUBSTANCE which should be handled by trained staff only.
Storage:	4 °C,-20 °C
Storage Comment:	Store at 4°C for three months and -20°C, stable for up to one year. As with all antibodies care should be taken to avoid repeated freeze thaw cycles. Antibodies should not be exposed to prolonged high temperatures.



Western Blotting

Image 1. Western Blot at 1:1000 dilution + K562 whole cell lysate Lysates/proteins at 20 ug per lane.



Western Blotting

Image 2. Antibody is used in Western blot to detect MBD2 in A375 cell lysate (lane 1) and mouse brain tissue lysate (lane 2) lysate.