

Datasheet for ABIN5531586

anti-Metabotropic Glutamate Receptor 6 antibody (C-Term)[Go to Product page](#)**2** Images

Overview

Quantity:	400 µL
Target:	Metabotropic Glutamate Receptor 6 (GRM6)
Binding Specificity:	AA 832-861, C-Term
Reactivity:	Human
Host:	Rabbit
Clonality:	Polyclonal
Conjugate:	This Metabotropic Glutamate Receptor 6 antibody is un-conjugated
Application:	Western Blotting (WB), Flow Cytometry (FACS)

Product Details

Immunogen:	This Metabotropic Glutamate Receptor 6 (GPRC1F) antibody is generated from rabbits immunized with a KLH conjugated synthetic peptide between 832-861 amino acids from the C-terminal region of human Metabotropic Glutamate Receptor 6 (GPRC1F).
Isotype:	Ig Fraction
Purification:	This antibody is purified through a protein A column, followed by peptide affinity purification.

Target Details

Target:	Metabotropic Glutamate Receptor 6 (GRM6)
Alternative Name:	Metabotropic Glutamate Receptor 6 (GRM6 Products)
Background:	L-glutamate is the major excitatory neurotransmitter in the central nervous system and activates both ionotropic and metabotropic glutamate receptors. Glutamatergic

Target Details

neurotransmission is involved in most aspects of normal brain function and can be perturbed in many neuropathologic conditions. The metabotropic glutamate receptors are a family of G protein-coupled receptors, that have been divided into 3 groups on the basis of sequence homology, putative signal transduction mechanisms, and pharmacologic properties. Group I includes GRM1 and GRM5 and these receptors have been shown to activate phospholipase C. Group II includes GRM2 and GRM3 while Group III includes GRM4, GRM6, GRM7 and GRM8. Group II and III receptors are linked to the inhibition of the cyclic AMP cascade but differ in their agonist selectivities.

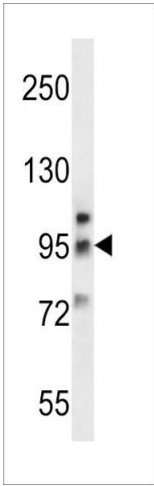
Molecular Weight:	95 kDa
Gene ID:	2916
UniProt:	O15303

Application Details

Application Notes:	For WB starting dilution is: 1:1000 For FACS starting dilution is: 1:10~50
Restrictions:	For Research Use only

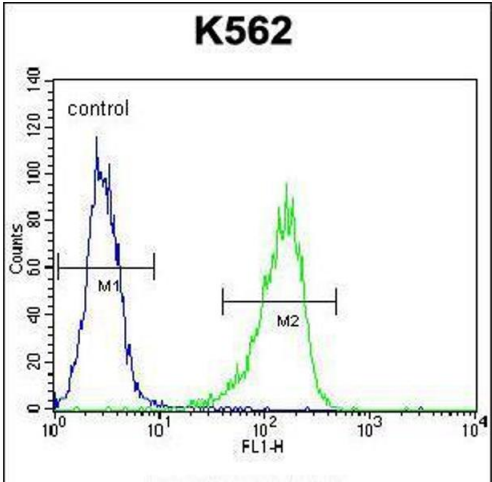
Handling

Format:	Liquid
Concentration:	0.5 mg/mL
Buffer:	Supplied in PBS with 0.09 % (W/V) sodium azide.
Preservative:	Sodium azide
Precaution of Use:	This product contains Sodium azide: a POISONOUS AND HAZARDOUS SUBSTANCE which should be handled by trained staff only.
Storage:	4 °C, -20 °C
Storage Comment:	Store at 4°C for three months and -20°C, stable for up to one year. As with all antibodies care should be taken to avoid repeated freeze thaw cycles. Antibodies should not be exposed to prolonged high temperatures.



Western Blotting

Image 1. Western blot analysis in K562 cell line lysates (35ug/lane).



Flow Cytometry

Image 2. Flow cytometric analysis of K562 cells (right histogram) compared to a negative control cell (left histogram).FITC-conjugated goat-anti-rabbit secondary antibodies were used for the analysis.