

Datasheet for ABIN5531587
anti-Midline 2 antibody (C-Term)

2 Images

[Go to Product page](#)

Overview

| | |
|----------------------|--|
| Quantity: | 400 µL |
| Target: | Midline 2 (MID2) |
| Binding Specificity: | AA 690-717, C-Term |
| Reactivity: | Human |
| Host: | Rabbit |
| Clonality: | Polyclonal |
| Conjugate: | This Midline 2 antibody is un-conjugated |
| Application: | Western Blotting (WB), Immunohistochemistry (Paraffin-embedded Sections) (IHC (p)) |

Product Details

| | |
|---------------|--|
| Immunogen: | This MID2 antibody is generated from rabbits immunized with a KLH conjugated synthetic peptide between 690-717 amino acids from the C-terminal region of human MID2. |
| Isotype: | Ig Fraction |
| Purification: | This antibody is purified through a protein A column, followed by peptide affinity purification. |

Target Details

| | |
|-------------------|---|
| Target: | Midline 2 (MID2) |
| Alternative Name: | MID2 (MID2 Products) |
| Background: | The protein encoded by this gene is a member of the tripartite motif (TRIM) family. The TRIM motif includes three zinc-binding domains, a RING, a B-box type 1 and a B-box type 2, and a coiled-coil region. The protein localizes to microtubular structures in the cytoplasm. Alternate |

Target Details

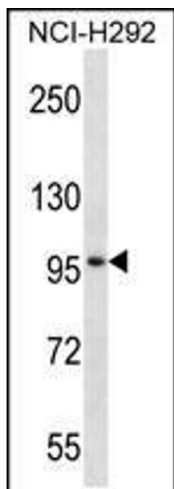
| | |
|-------------------|---|
| | splicing of this gene results in two transcript variants encoding different isoforms. |
| Molecular Weight: | 83 kDa |
| Gene ID: | 11043 |
| UniProt: | Q9UJV3 |

Application Details

| | |
|--------------------|---|
| Application Notes: | For WB starting dilution is: 1:1000 |
| | For IHC-P starting dilution is: 1:10~50 |
| Restrictions: | For Research Use only |

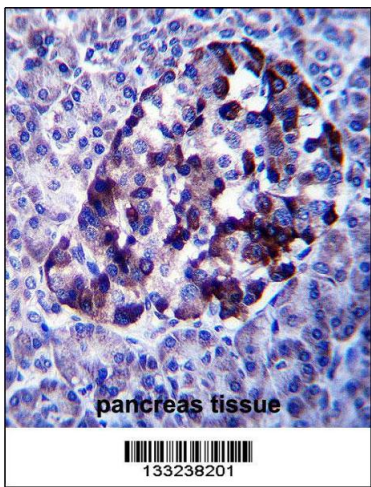
Handling

| | |
|--------------------|--|
| Format: | Liquid |
| Concentration: | 0.41 mg/mL |
| Buffer: | Supplied in PBS with 0.09 % (W/V) sodium azide. |
| Preservative: | Sodium azide |
| Precaution of Use: | This product contains Sodium azide: a POISONOUS AND HAZARDOUS SUBSTANCE which should be handled by trained staff only. |
| Storage: | 4 °C, -20 °C |
| Storage Comment: | Store at 4°C for three months and -20°C, stable for up to one year. As with all antibodies care should be taken to avoid repeated freeze thaw cycles. Antibodies should not be exposed to prolonged high temperatures. |



Western Blotting

Image 1. Western blot analysis in NCI-H292 cell line lysates (35ug/lane).



Immunohistochemistry

Image 2. MID2 Antibody immunohistochemistry analysis in formalin fixed and paraffin embedded human pancreas tissue followed by peroxidase conjugation of the secondary antibody and DAB staining.