

Datasheet for ABIN5531589
anti-MIPEP antibody (N-Term)[Go to Product page](#)

2 Images

Overview

Quantity:	400 µL
Target:	MIPEP
Binding Specificity:	AA 180-209, N-Term
Reactivity:	Human
Host:	Rabbit
Clonality:	Polyclonal
Conjugate:	This MIPEP antibody is un-conjugated
Application:	Western Blotting (WB), Immunohistochemistry (Paraffin-embedded Sections) (IHC (p))

Product Details

Immunogen:	This MIPEP antibody is generated from rabbits immunized with a KLH conjugated synthetic peptide between 180-209 amino acids from the N-terminal region of human MIPEP.
Isotype:	Ig Fraction
Purification:	This antibody is prepared by Saturated Ammonium Sulfate (SAS) precipitation followed by dialysis

Target Details

Target:	MIPEP
Alternative Name:	MIPEP (MIPEP Products)
Background:	MIPEP performs the final step in processing a specific class of nuclear-encoded proteins targeted to the mitochondrial matrix or inner membrane. This protein is primarily involved in the

Target Details

maturation of oxidative phosphorylation (OXPHOS)-related proteins. This protein may contribute to the functional effects of frataxin deficiency and the clinical manifestations of Friedreich ataxia.

Molecular Weight: 81 kDa

Gene ID: 4285

UniProt: [Q99797](#)

Application Details

Application Notes: For WB starting dilution is: 1:1000

For IHC-P starting dilution is: 1:10~50

Restrictions: For Research Use only

Handling

Format: Liquid

Concentration: 2 mg/mL

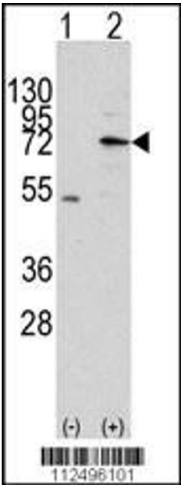
Buffer: Supplied in PBS with 0.09 % (W/V) sodium azide.

Preservative: Sodium azide

Precaution of Use: This product contains Sodium azide: a POISONOUS AND HAZARDOUS SUBSTANCE which should be handled by trained staff only.

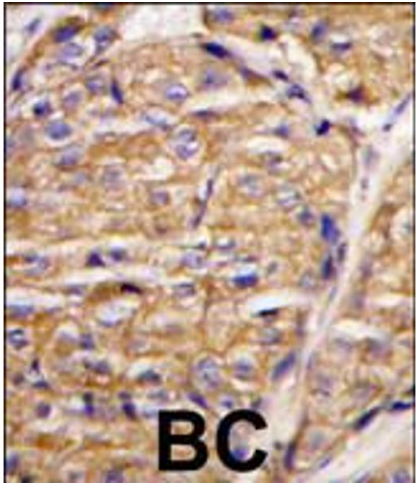
Storage: 4 °C,-20 °C

Storage Comment: Store at 4°C for three months and -20°C, stable for up to one year. As with all antibodies care should be taken to avoid repeated freeze thaw cycles. Antibodies should not be exposed to prolonged high temperatures.



Western Blotting

Image 1. Western blot analysis of MIPEP using rabbit polyclonal MIPEP Antibody using 293 cell lysates (2 ug/lane) either nontransfected (Lane 1) or transiently transfected with the MIPEP gene (Lane 2).



Immunohistochemistry

Image 2. Formalin-fixed and paraffin-embedded human breast carcinoma tissue reacted with MIPEP antibody , which was peroxidase-conjugated to the secondary antibody, followed by DAB staining.