

Datasheet for ABIN5531590
anti-MIPEP antibody (AA 307-336)[Go to Product page](#)

2 Images

Overview

Quantity:	400 µL
Target:	MIPEP
Binding Specificity:	AA 307-336
Reactivity:	Human
Host:	Rabbit
Clonality:	Polyclonal
Conjugate:	This MIPEP antibody is un-conjugated
Application:	Western Blotting (WB), Immunohistochemistry (Paraffin-embedded Sections) (IHC (p))

Product Details

Immunogen:	This MIPEP antibody is generated from rabbits immunized with a KLH conjugated synthetic peptide between 307-336 amino acids from the Central region of human MIPEP.
Isotype:	Ig Fraction
Purification:	This antibody is prepared by Saturated Ammonium Sulfate (SAS) precipitation followed by dialysis

Target Details

Target:	MIPEP
Alternative Name:	MIPEP (MIPEP Products)
Background:	MIPEP performs the final step in processing a specific class of nuclear-encoded proteins targeted to the mitochondrial matrix or inner membrane. This protein is primarily involved in the

Target Details

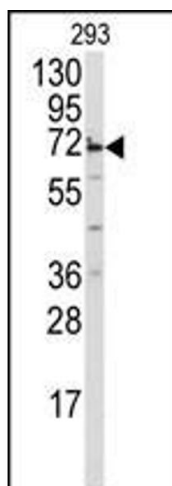
	maturation of oxidative phosphorylation (OXPHOS)-related proteins. It may contribute to the functional effects of frataxin deficiency and the clinical manifestations of Friedreich ataxia.
Molecular Weight:	81 kDa
Gene ID:	4285
UniProt:	Q99797

Application Details

Application Notes:	For WB starting dilution is: 1:1000 For IHC-P starting dilution is: 1:10~50
Restrictions:	For Research Use only

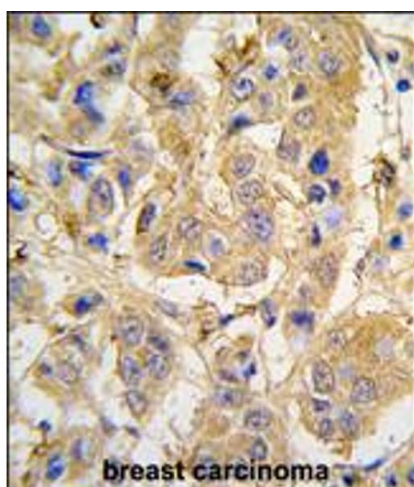
Handling

Format:	Liquid
Concentration:	2 mg/mL
Buffer:	Supplied in PBS with 0.09 % (W/V) sodium azide.
Preservative:	Sodium azide
Precaution of Use:	This product contains Sodium azide: a POISONOUS AND HAZARDOUS SUBSTANCE which should be handled by trained staff only.
Storage:	4 °C, -20 °C
Storage Comment:	Store at 4°C for three months and -20°C, stable for up to one year. As with all antibodies care should be taken to avoid repeated freeze thaw cycles. Antibodies should not be exposed to prolonged high temperatures.



Western Blotting

Image 1. Western blot analysis of anti-MIPEP Antibody in 293 cell line lysates (35ug/lane)



Immunohistochemistry

Image 2. Formalin-fixed and paraffin-embedded human breast carcinoma tissue reacted with MIPEP antibody, which was peroxidase-conjugated to the secondary antibody, followed by DAB staining.