

Datasheet for ABIN5531625  
**anti-MYL9 antibody (C-Term)**



[Go to Product page](#)

2 Images

## Overview

Quantity:	400 µL
Target:	MYL9
Binding Specificity:	AA 96-125, C-Term
Reactivity:	Human
Host:	Rabbit
Clonality:	Polyclonal
Application:	Western Blotting (WB), Immunohistochemistry (Paraffin-embedded Sections) (IHC (p))

## Product Details

Immunogen:	This MYL9 antibody is generated from rabbits immunized with a KLH conjugated synthetic peptide between 96-125 amino acids from the C-terminal region of human MYL9.
Isotype:	Ig Fraction
Purification:	This antibody is purified through a protein A column, followed by peptide affinity purification.

## Target Details

Target:	MYL9
Alternative Name:	MYL9 ( <a href="#">MYL9 Products</a> )
Background:	Myosin, a structural component of muscle, consists of two heavy chains and four light chains. The protein encoded by this gene is a myosin light chain that may regulate muscle contraction by modulating the ATPase activity of myosin heads. The encoded protein binds calcium and is activated by myosin light chain kinase. Two transcript variants encoding different isoforms

## Target Details

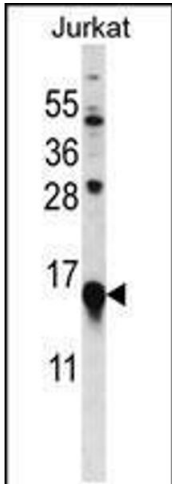
	have been found for this gene.
Molecular Weight:	20 kDa
Gene ID:	10398
UniProt:	<a href="#">P24844</a>

## Application Details

Application Notes:	For WB starting dilution is: 1:1000
	For IHC-P starting dilution is: 1:10~50
Restrictions:	For Research Use only

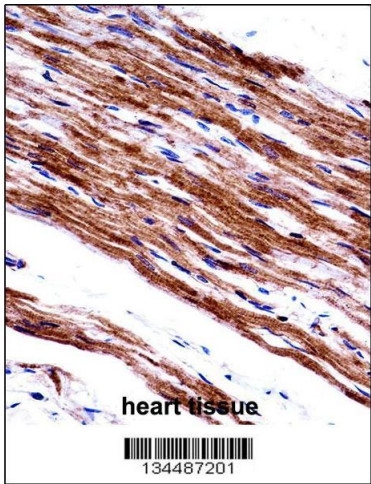
## Handling

Format:	Liquid
Concentration:	0.5 mg/mL
Buffer:	Supplied in PBS with 0.09 % (W/V) sodium azide.
Preservative:	Sodium azide
Precaution of Use:	This product contains Sodium azide: a POISONOUS AND HAZARDOUS SUBSTANCE which should be handled by trained staff only.
Storage:	4 °C, -20 °C
Storage Comment:	Store at 4°C for three months and -20°C, stable for up to one year. As with all antibodies care should be taken to avoid repeated freeze thaw cycles. Antibodies should not be exposed to prolonged high temperatures.



#### Western Blotting

**Image 1.** Western blot analysis in Jurkat cell line lysates (35ug/lane).



#### Immunohistochemistry

**Image 2.** MYL9 Antibody immunohistochemistry analysis in formalin fixed and paraffin embedded human heart tissue followed by peroxidase conjugation of the secondary antibody and DAB staining.