



[Go to Product page](#)

Datasheet for ABIN5531639

## anti-MC5 Receptor antibody (C-Term)

### 3 Images

#### Overview

Quantity:	400 µL
Target:	MC5 Receptor (MC5R)
Binding Specificity:	AA 261-288, C-Term
Reactivity:	Human
Host:	Rabbit
Clonality:	Polyclonal
Conjugate:	This MC5 Receptor antibody is un-conjugated
Application:	Western Blotting (WB), Immunohistochemistry (Paraffin-embedded Sections) (IHC (p)), Flow Cytometry (FACS)

#### Product Details

Immunogen:	This MC2R antibody is generated from rabbits immunized with a KLH conjugated synthetic peptide between 261-288 amino acids from the C-terminal region of human MC2R.
Isotype:	Ig Fraction
Purification:	This antibody is purified through a protein A column, followed by peptide affinity purification.

#### Target Details

Target:	MC5 Receptor (MC5R)
Alternative Name:	MC2 ( <a href="#">MC5R Products</a> )
Background:	MC2R encodes one member of the five-member G-protein associated melanocortin receptor family. Melanocortins (melanocyte-stimulating hormones and adrenocorticotrophic hormone)

## Target Details

---

are peptides derived from pro-opiomelanocortin (POMC). MC2R is selectively activated by adrenocorticotrophic hormone, whereas the other four melanocortin receptors recognize a variety of melanocortin ligands.

Molecular Weight: 34 kDa

Gene ID: 4158

UniProt: [Q01718](#)

Pathways: [cAMP Metabolic Process](#)

## Application Details

---

Application Notes: For WB starting dilution is: 1:1000

For IHC-P starting dilution is: 1:10~50

For FACS starting dilution is: 1:10~50

Restrictions: For Research Use only

## Handling

---

Format: Liquid

Concentration: 0.5 mg/mL

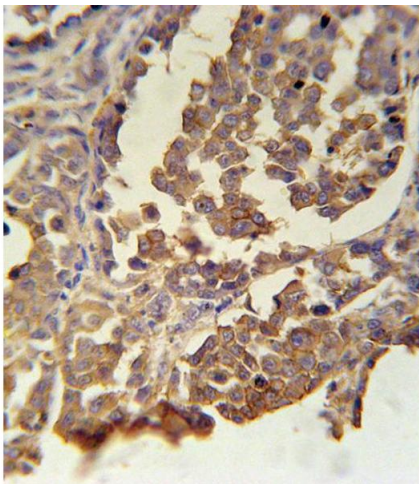
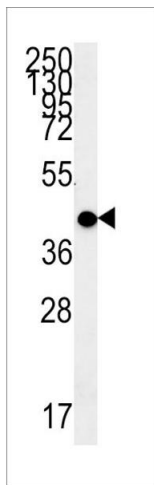
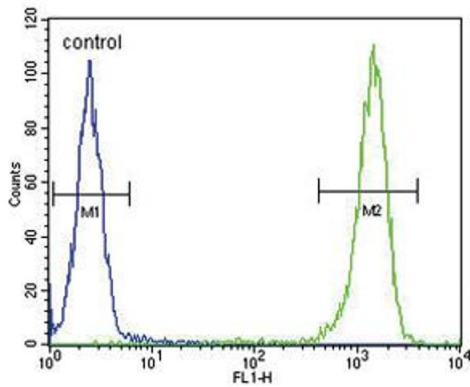
Buffer: Supplied in PBS with 0.09 % (W/V) sodium azide.

Preservative: Sodium azide

Precaution of Use: This product contains Sodium azide: a POISONOUS AND HAZARDOUS SUBSTANCE which should be handled by trained staff only.

Storage: 4 °C,-20 °C

Storage Comment: Store at 4°C for three months and -20°C, stable for up to one year. As with all antibodies care should be taken to avoid repeated freeze thaw cycles. Antibodies should not be exposed to prolonged high temperatures.



### Flow Cytometry

**Image 1.** Flow cytometric analysis of WiDr cells (right histogram) compared to a negative control cell (left histogram). FITC-conjugated goat-anti-rabbit secondary antibodies were used for the analysis.

### Western Blotting

**Image 2.** Western blot analysis in WiDr cell line lysates (15ug/lane).

### Immunohistochemistry

**Image 3.** MC2R Antibody immunohistochemistry analysis in formalin fixed and paraffin embedded human skin carcinoma followed by peroxidase conjugation of the secondary antibody and DAB staining.